

MARIAN GOODMAN GALLERY

TAVARES STRACHAN

I N P L A I N S I G H T

8 September – 24 October 2020

Reception



Tavares Strachan

We Are in This Together (Multi), 2019 Cobalt, super blue, sky blue, traffic light green, green, clear gold neon, transformers 16 x 73 x 3/8 in. (40.6 x 185.4 x 0.8 cm) Edition of 9 plus 2 artist's proofs (#6/9) (24010)

Gallery One



Tavares Strachan

Katherine Johnson (West Virginia State College), 2020
Acrylic, pyrex, mineral oil
41 x 40 x 32 in. (104.1 x 101.6 x 81.3 cm) (24208)



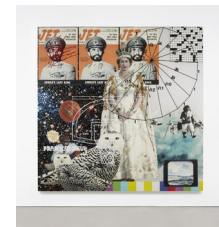
Tavares Strachan

The Awakening, 2020
2 panels; oil, enamel, and pigment on acrylic
96 x 48 x 2 in. (243.8 x 121.9 x 5.1 cm) (each)
96 x 96 x 2 in. (243.8 x 243.8 x 5.1 cm) (overall)
(24177)



Tavares Strachan

Before the Fire, 2020
2 panels; oil, enamel, and pigment on acrylic
96 x 48 x 2 in. (243.8 x 121.9 x 5.1 cm) (each)
96 x 96 x 2 in. 243.8 x 243.8 x 5.1 cm (overall)
(24178)



Tavares Strachan

Every Knee Shall Bow, 2020
2 panels; oil, enamel, and pigment on acrylic
96 x 48 x 2 in. (243.8 x 121.9 x 5.1 cm) (each)
96 x 96 x 2 in. 243.8 x 243.8 x 5.1 cm (overall)
(24175)



Tavares Strachan

Throwing away Discobolus, 2020
2 panels; oil, enamel, and pigment on acrylic
96 x 48 x 2 in. (243.8 x 121.9 x 5.1 cm) (each)
96 x 96 x 2 in. 243.8 x 243.8 x 5.1 cm (overall)
(24171)



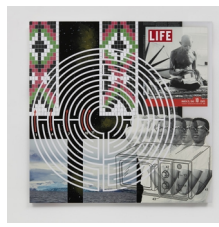
Tavares Strachan

No Name in the Street, 2020
2 panels; oil, enamel, and pigment on acrylic
96 x 48 x 2 in. (243.8 x 121.9 x 5.1 cm) (each)
96 x 96 x 2 in. 243.8 x 243.8 x 5.1 cm (overall)
(24174)



Tavares Strachan

Touch the Stars, 2020
2 panels; oil, enamel, and pigment on acrylic
96 x 48 x 2 in. (243.8 x 121.9 x 5.1 cm) (each)
96 x 96 x 2 in. 243.8 x 243.8 x 5.1 cm (overall)
(24170)



Tavares Strachan

1946, 2020
Oil, enamel, and pigment on acrylic
36 x 36 x 2 in. (91.4 x 91.4 x 5.1 cm)
(24173)

NEW YORK PARIS LONDON

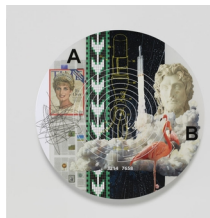
WWW.MARIANGOODMAN.COM

MARIAN GOODMAN GALLERY

TAVARES STRACHAN

I N P L A I N S I G H T

8 September – 24 October 2020



Tavares Strachan

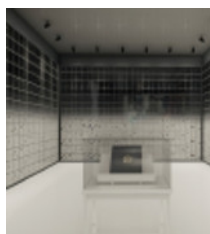
It's Over, 2020

Oil, enamel, and pigment on acrylic

Diameter: 60 in. (152.4 cm)

Depth: 2 in. (5.1 cm)
(24172)

Gallery Two



Tavares Strachan

EIGHTEEN NINETY, 2020

Approx. 1354 panels; UV ink, vinyl, graphite,
oil stick, mylar, collage, acrylic, sintra

11 x 8 x 2 1/8 in. (27.9 x 20.3 x 5.4 cm) (each)
(24179)



Tavares Strachan

The Encyclopedia of Invisibility (Mahogany #9), 2018

Leather, gilding, archival paper, maple, felt,
acrylic

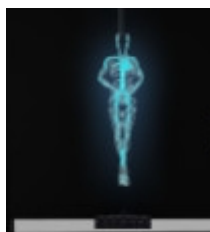
Book: 15 3/8 x 13 3/8 x 5 in. (39.1 x 34 x 12.7
cm)

With stand: 55 x 36 x 20 5/8 in. (139.7 x 91.4
x 52.4 cm)

Series of 9 plus 2 artist's proofs (each is
unique) (#9/9)

(24180)

Entrance Hallway



Tavares Strachan

Alicia Alonso, 2020

Glass, neon, transformers

Figure: 72 x 24 x 18 in. (182.9 x 61 x 45.7 cm)

Transformer box: 10 x 40 x 16 in. (25.4 x
101.6 x 40.6 cm)

(24181)

NEW YORK PARIS LONDON

WWW.MARIANGOODMAN.COM

MARIAN GOODMAN GALLERY

TAVARES STRACHAN

I N P L A I N S I G H T

8 September – 24 October 2020

Upstairs Gallery



Tavares Strachan

Distant Relatives (Robert Smalls), 2020
Bembe Mask (Democratic Republic of Congo), pigment, natural fibers, plaster, brass, acrylic
60 x 22 x 20 in. (152.4 x 55.9 x 50.8 cm)
(24195)



Tavares Strachan

Distant Relatives (Nina Simone), 2020
Fang Mask (Central Africa), pigment, natural fibers, plaster, brass, acrylic
90 x 22 x 18 in. (228.6 x 55.9 x 45.7 cm)
(24196)



Tavares Strachan

Distant Relatives (James Baldwin), 2020
Bambara Mask (West Africa), pigment, horse hair, gold leaf, plaster, brass, acrylic
68 x 22 x 18 1/2 in. (172.7 x 55.9 x 47 cm)
(24187)



Tavares Strachan

Distant Relatives (Mary J. Seacole), 2020
Fang Ngil Mask (Central Africa), pigment, horse hair, plaster, brass, acrylic
59 x 22 x 18 1/2 in. (149.9 x 55.9 x 47 cm)
(24189)



Tavares Strachan

Distant Relatives (Vivian Anderson), 2020
Fang Ngil Mask (Central Africa), pigment, natural fibers, plaster, brass, acrylic
67 x 24 x 30 in. (170.2 x 61 x 76.2 cm)
(24193)



Tavares Strachan

Distant Relatives (Andrea Motley Crabtree), 2020
Plaster, natural fibers, brass, acrylic
62 x 30 x 26 in. (157.5 x 76.2 x 66 cm)
(24344)



Tavares Strachan

Distant Relatives (Sister Rosetta Tharpe), 2020
Guere Mask (Liberia), pigment, wood, gold leaf, plaster, brass, acrylic
71 1/2 x 32 x 42 in. (181.6 x 81.3 x 106.7 cm)
(24191)



Tavares Strachan

Distant Relatives (Matthew Henson), 2020
Murik Lakes Lower Sepik River Spirit Mask (Papua New Guinea), pigment, plaster, brass, acrylic
64 x 24 x 18 1/2 in. (162.6 x 61 x 47 cm)
(24192)

NEW YORK PARIS LONDON

WWW.MARIANGOODMAN.COM

M A R I A N G O O D M A N G A L L E R Y

T A V A R E S S T R A C H A N

I N P L A I N S I G H T

8 September – 24 October 2020



Tavares Strachan

Distant Relatives (Henrietta Lacks), 2020
Kifwebe Song Mask (Democratic Republic of Congo), pigment natural fibers, plaster, brass, acrylic
61 x 22 x 19 in. (154.9 x 55.9 x 48.3 cm)
(24188)



Tavares Strachan

Distant Relatives (Shirley Chisholm), 2020
Kuba Elephant Mask (Democratic Republic of Congo), pigment, natural fibers, cowrie shells, leather, beads, plaster, brass, acrylic
86 x 51 x 20 in. (218.4 x 129.5 x 50.8 cm)
(24194)



Tavares Strachan

Distant Relatives (Derek Walcott), 2020
Kavat Mask (Papua New Guinea), pigment, natural fibers, plaster, brass, acrylic
72 x 36 x 36 in. (182.9 x 91.4 x 91.4 cm)
(24190)



Tavares Strachan

Distant Relatives (Robert Henry Lawrence Jr.), 2020
Plaster, natural fibers, brass, acrylic
58 1/2 x 32 x 26 in. (148.6 x 81.3 x 66 cm)
(24197)

N E W Y O R K P A R I S L O N D O N

W W W . M A R I A N G O O D M A N . C O M

