

# Marian Goodman Gallery installation

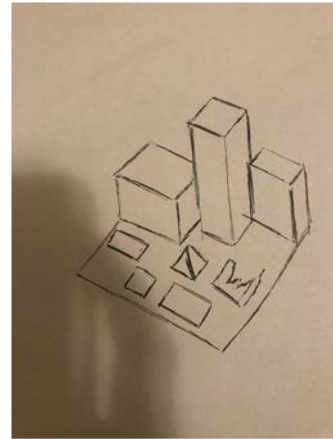
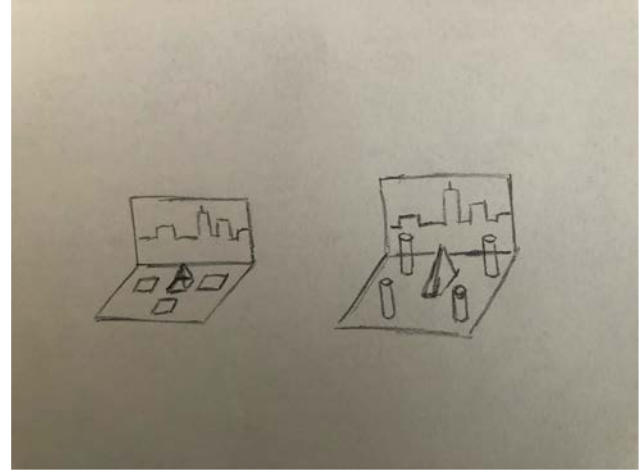
Daniel Panucci

A large, dark blue, diagonal shape that starts from the bottom left corner and extends towards the top right corner, covering the lower half of the image.

# Mission/ Artist Statement

For my 3D installation on the Marian Goodman gallery I will use the ordering principles of Hierarchy, repetition and symmetry. The focus for my model is to create a story of my life with certain magnets (which is one thing that i love to collect) representing different places that I was born in and i've been to. In the background I will show a cityscape to represent both my love for architecture and me living in nyc. The magnets will be placed in a heirarcal and symmetrical pattern incorporating the grid system for this project. I will also include some board game pieces as well to add more details and repetition. I also wanted to add something more to my ideas. I decided to add a street and also a city skyline in the background to give the perfect touch to this project. It will emphasize my love and passion for architecture even more and the streets will make it feel more like a grid system.

# Sketches of model



Final sketch of model

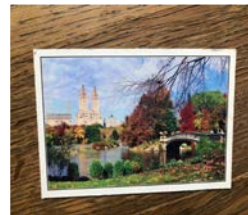
# Photos of 2D/3D things



# Photos continued



# Photos continued



# Photos continued



# Inspiration artist

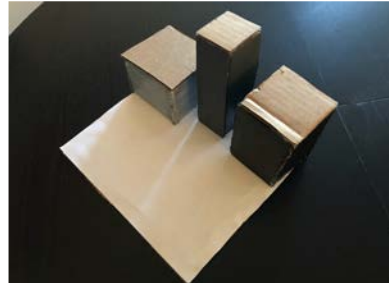
The artist that I chose to get inspiration from was Sol Lewitt with his picture taking process to represent his life and autobiography just like I did with my magnets on my project to represent all the places i've been in my life and going from my origins of Genova Italy all the way to present day in the big city of New York.



<http://mousse magazine.it/sol-lewitt-lines-fondazione-carriero-milan-2018/>



# Project process for model with audio link



<https://drive.google.com/file/d/13s3QXR-F2yPjLDrj27WjRcHelxBzoGnu/view?usp=sharing>

# New Final and completed model





Daniele Panucci

# Daniele Panucci Artist Statement

My 3D Self Portrait Project for the Marian Goodman Gallery was designed with Ordering Principles of hierarchy, repetition and symmetry. The focus for my model is to create a story of my life. I used my collection of certain magnets which I love. They represent different places that I was born in and places I have been to. In the background, I will show a cityscape to represent both my love for architecture and me living in nyc. The magnets are placed in a hierarchical and symmetrical pattern incorporating the grid system for this project. I included some board game pieces as well to add more details and repetition. I also added something more to my ideas. I added a street and a city skyline in the background to give the perfect touch to this project. It emphasizes my love and passion for architecture even more and the streets make it feel more like a grid system.