

## MARIAN GOODMAN PROJECTS

### MULTIPLES, INC.

London | 2 June – 30 July 2021

#### Front Space



**Andy Warhol**

*Flowers (Hand Colored) No. 10, 1974*

One from a set of 10 different flower compositions silkscreened in blk and watercolored by the artist

Sheet: 40 3/4 x 27 1/4 in. (103.8 x 69.2 cm)

Frame: 44 1/4 x 30 3/4 x 1 3/4 in. (112.4 x 78 x 4.5 cm)

Edition of 250 plus 50 artist's proofs

(0532)



**Lawrence Weiner**

*ISLANDS IN THE STORM, 1990*

4 sheets; photogravure, etching, aquatint, and softground on Chine collé, mounted on Somerset paper

Sheet: 17 1/4 x 23 1/4 in. (43.8 x 59.1 cm) (each)

Frame: 37 1/2 x 49 3/8 x 1 3/4 in. (95.3 x 125.3 x 4.5 cm)

Edition of 35 plus 10 artist's proofs

(2570)



**Claes Oldenburg**

*Knife Ship Superimposed on the Guggenheim Museum, 1986*

Silkscreen on paper

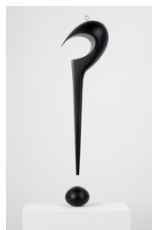
Plate: 21 5/8 x 28 5/8 in. (54.9 x 72.7 cm)

Sheet: 30 1/2 x 36 3/4 in. (77.5 x 93.3 cm)

Frame: 33 x 39 1/8 x 1 3/4 in. (83.7 x 99.5 x 4.5 cm)

Edition of 75 plus 15 artist's proofs

(1461)



**Richard Artschwager**

*Pregunta I, 1983*

Acrylic on wood, steel

2 parts: 24 5/8 x 7 3/4 x 6 in. (62.5 x 19.7 x 15.2 cm);

4 x 4 x 3 1/4 in. (10.2 x 10.2 x 8.3 cm)

Edition of 6 plus 2 artist's proofs

(0030)



**William Wegman**

*Untitled (Man Ray), 1975*

Gelatin silver print, mounted on rag board

Sheet: 10 1/2 x 13 1/2 in. (26.7 x 34.3 cm)

Frame: 16 5/8 x 19 1/2 x 1 1/8 in. (42.3 x 49.4 x 3 cm)

Edition of 60 plus 21 artist's proofs

(0028)

23 GOLDEN SQUARE LONDON W1F 9JP

+44 (0) 20 7099 0088 MARIANGOODMAN.COM

## MARIAN GOODMAN PROJECTS



### Ed Ruscha

*Make Up Department*, 1975

Three color dye transfer print, Artists & Photographs Portfolio

Paper: 16 x 20 in. (40.64 x 50.8 cm)

Frame: 18 1/2 x 22 3/4 x 1 5/8 in. (47 x 57.7 x 4 cm)

Edition of 60 plus 17 artist's proofs

(0027)



### Bernd & Hilla Becher

*Minnich Coal Co., Goodsprings Mountains, Schuylkill County, Pennsylvania*, 1975

Gelatin silver print, 4 photographs mounted on rag board

Photos: 4 3/8 x 6 1/4 in. (11.1 x 15.9 cm) (each)

Sheet: 16 x 19 1/2 in. (40.6 x 49.5 cm)

Frame: 16 1/2 x 20 1/8 x 1 1/8 in. (42 x 51 x 3 cm)

Edition of 60 plus 21 artist's proofs

(0022)



### Roy Lichtenstein

*Before the Mirror*, 1975

Lithograph and screenprint with embossing on BFK Rives roll stock paper

Plate: 35 1/8 x 25 in. (89.2 x 63.5 cm)

Sheet: 42 7/8 x 32 in. (108.9 x 81.3 cm)

Frame: 46 3/4 x 36 1/2 x 1 3/4 in. (118.9 x 92.7 x 4.5 cm)

Edition of 100 plus 30 artist's proofs

(0329)



### Sol LeWitt

*Fifteen Equal Arcs From The Midpoint of the Bottom, with All One-, Two-, Three- and Four- Part Combinations of Four Colors*, 1990

Aquatint on Magnani Italia paper

Plate: 31 x 12 7/8 in. (78.7 x 32.7 cm)

Sheet: 36 1/2 x 18 1/2 in. (92.7 x 47 cm)

Frame: 39 x 21 1/8 x 1 5/8 in. (99 x 53.5 x 4 cm)

Edition of 30 plus 8 artist's proofs

(2532)



### Sol LeWitt

*Schematic Drawing for Muybridge II*, 1964/1970

Offset lithograph on paper, folded, in slipcase

5 1/8 x 12 5/8 in. (13 x 32.1 cm)

Edition of 1200, unsigned, unnumbered

(14770)



### Richard Long

*Rain Dance. August 24, 1969. The Rift Valley, East Africa. (A 3/4 Mile Travelling Piece Documented by 4 Photographs)*, 1970

Offset lithograph on board (recto and verso)

8 x 12 in. (20.3 x 30.5 cm)

Edition of 1200, unsigned, unnumbered

(14771)

## MARIAN GOODMAN PROJECTS



### Allan Kaprow

*Pose: Carrying Chairs through the City, Sitting Down Here and There, Photographed, Pix Left on Spot, Going On*, 1970

Offset lithograph on board, 7 sheets in printed manila envelope

Sheet: 10 3/4 x 7 7/8 in. (27.3 x 20 cm) (each)

Envelope: 12 x 9 in. (30.5 x 22.9 cm)

Edition of 1200, unsigned, unnumbered  
(14769)



### Dan Graham

*Two Parallel Essays: Photographs of Motion / Two Related Projects for Slide Projectors*, 1970

Book; offset lithograph on paper, 12 pages, softcover, stapled

11 x 7 in. (27.9 x 17.8 cm)

Edition of 1200, unsigned, unnumbered  
(14767)



### Christo

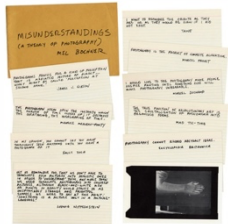
*Packed Tower, Spoleto, Italy*, 1968/1970

Offset lithograph on paper, 9 sheets in cardboard box

Cards: 10 x 7. 3/4 in. (25.4 x 19.7 cm)

Box: 10 1/2 x 8 1/2 x 3/4 in. (26.67 x 21.59 x 1.9 cm)

Edition of 1200, unsigned, unnumbered  
(14777)



### Mel Bochner

*Misunderstandings (A Theory of Photography)*, 1970

Offset lithograph on 10 preprinted notecards in printed envelope

Notecards: 4 3/4 x 8 in. (12.1 x 20.3 cm) (each)

Envelope: 5 15/16 x 9 in. (15.1 x 22.9 cm)

Edition of 1200, unsigned, unnumbered  
(14765)



### Roy Lichtenstein

*Small Modern Head Pin*, published 2021 after a 1968 design

© The Estate of Roy Lichtenstein

Fabricated by Multiples, Inc. | MGG 2021

2 x 1 1/2 in. (5.1 x 3.8 cm)

Edition of 1000, unsigned, unnumbered

## MARIAN GOODMAN PROJECTS

### Middle Space



#### Man Ray

*Les grands trans-Parents*, 1974

Screenprint on mirrored Altuglas

Mirror: 25 1/2 x 19 1/2 in. (64.8 x 49.5 cm)

Frame: 25 5/8 x 19 3/4 x 3/4 in. (65.2 x 50 x 2 cm)

Edition of 100 plus 30 artist's proofs

(0333)



#### Ed Ruscha

*Domestic Tranquility: Bowl*, 1974

One from a set of four color lithographs

Image: 12 x 15 1/4 in. (30.5 x 38.7 cm)

Paper: 18 x 22 1/4 in. (45.7 x 56.5 cm)

Frame: 19 3/4 x 24 x 1 1/2 in. (50.2 x 61 x 3.8 cm)

Edition of 65 plus 24 artist's proofs

(0500)



#### Ed Ruscha

*Domestic Tranquility: Plate*, 1974

One from a set of four color lithographs

Image: 8 1/4 x 19 in. (21 x 48.3 cm)

Paper: 18 x 26 in. (45.7 x 66 cm)

Frame: 19 3/4 x 27 3/4 x 1 1/2 in. (50.2 x 70.5 x 3.8 cm)

Edition of 65 plus 24 artist's proofs

(0501)



#### Ed Ruscha

*Domestic Tranquility: Egg*, 1974

One from a set of four color lithograph

Image: 8 1/2 x 18 3/4 in. (21.6 x 47.6 cm)

Paper: 16 1/4 x 26 in. (41.3 x 66 cm)

Frame: 18 x 27 3/4 x 1 1/2 in. (45.7 x 70.5 x 3.8 cm)

Edition of 65 plus 24 artist's proofs

(0502)



#### Robert Rauschenberg

*Two Reasons Birds Sing*, 1979

Screenprint on paper, on fabric, on Arches roll stock paper

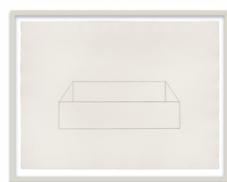
Image: 30 3/4 x 19 1/2 in. (78.1 x 49.5 cm)

Sheet: 30 3/4 x 23 1/8 in. (78.1 x 58.7 cm)

Frame: 33 5/8 x 25 7/8 x 1 3/4 in. (85.3 x 65.6 x 4.6 cm)

Edition of 100

(2069)



#### Donald Judd

*Untitled*, 1974

Etching on German Etching paper

Sheet: 30 3/4 x 41 3/4 in. (78.1 x 106 cm)

Frame: 34 x 44 7/8 x 1 3/4 in. (86.3 x 114.1 x 4.5 cm)

Edition of 35

(0192)

## MARIAN GOODMAN PROJECTS



### Claes Oldenburg

*Colossal Flashlight in Place of Hoover Dam, 1982*

Photo-offset lithograph

Paper: 33 x 24 in. (83.8 x 61 cm)

Frame: 34 7/8 x 26 7/8 x 1 3/8 in. (88.5 x 68.2 x 3.6 cm)

Edition of 100 plus 15 artist's proofs

(0338)



### Andy Warhol

*Merce Cunningham II, 1979*

Screenprint on Japanese deacidified imported Florentine gift paper

Plate: 27 1/8 x 18 7/8 in. (68.9 x 47.9 cm)

Sheet: 30 x 20 in. (76.2 x 50.8 cm)

Frame: 32 5/8 x 22 3/4 x 1 1/2 in. (82.9 x 57.8 x 3.8 cm)

Edition of 25

(0547)



### Man Ray

*Letter Box, 1966*

Zinc sheet, spray-painted white (found mailboxes), ceramic letters, metal hooks

Letterbox: 10 x 7 1/4 x 2 3/4 in. (25.4 x 18.4 x 7 cm)

Signed prototype, unnumbered, from an unrealized edition

(0318)



### Dan Flavin

*For one walled circular fluorescent light (to Heiner Friedrich), 1974*

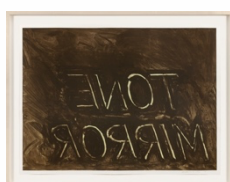
5 lithographs on BFK Rives paper, each titled, "—for circular fluorescent light of one wall," in portfolio

Sheet: 22 x 30 in. (55.9 x 76.2 cm) (each)

Frame: 24 3/4 x 32 5/8 x 1 1/2 in. (63 x 83 x 3.8 cm) (each)

Edition of 35

(0164)



### Bruce Nauman

*Tone Mirror, 1975*

Color lithograph from 'Mirrors of the Mind'

Paper: 30 x 40 in. (76.2 x 101.6 cm)

Frame: 33 1/2 x 43 1/2 x 1 3/4 in. (85.1 x 110.5 x 4.4 cm)

Edition of 100 plus 16 artist's proofs

(0330)



### Sol LeWitt

*Windows, 1980*

72 photographs on Kodak Ektacolor, 74 RC Paper dry-mounted on Museum Mount Board

Photo: 3 1/4 x 3 1/4 in. (8.3 x 8.3 cm) (each)

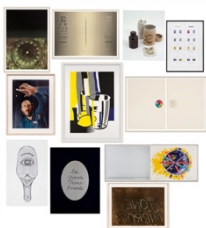
Sheet: 34 1/4 x 30 3/4 in. (87 x 78.1 cm)

Frame: 35 x 31 5/8 x 1 3/4 in. (88.9 x 80.4 x 4.5 cm)

Edition of 20 plus 5 artist's proofs

(0258/M)

## MARIAN GOODMAN PROJECTS



### Portfolio

#### *Mirrors of the Mind*, 1975

10 prints and 1 object by 11 artists, and a brochure with an introduction by Nicolas Calas, in box

Box with handles: 15/8 x 44 x 35 in. (41 x 111.8 x 88.9 cm)

Edition of 100 plus 30 artist's proofs  
(0323)

#### *Including:*

Vincenzo Agnetti, *Speculazione*, 1975 (0324)

Arakawa, *Test Mirror*, 1975 (0325)

Joseph Beuys, *Mirror Piece*, 1975 (0326)

Marcel Broodthaers, *Comédie*, 1974 (0327)

Richard Hamilton, *Palindrome*, 1975 (0328)

Roy Lichtenstein, *Before the Mirror*, 1975 (0329)

Bruce Nauman, *Tone Mirror*, 1975 (0330)

Meret Oppenheim, *Der verliebte Polyphem*, 1974 (0331)

Man Ray, *Les grands trans-Parents*, 1974 (0333)

Robert Rauschenberg, *Re-Entry*, 1975 (0332)

James Rosenquist, *Echo Pale*, 1975 (0334)



### Joseph Beuys

#### *Mirror Piece*, 1975

Glass flask, mirrored interior with iodine crystal, exterior successively lacquered in silver, copper, and brown; offset lithograph on card, "How to explain the iodine bottle to the Hares," in cylindrical cardboard box covered with screenprinted kraft paper

Bottle: 7 1/2 x 4 1/8 x 4 1/8 in. (19.1 x 10.5 x 10.5 cm)

Box: 9 1/4 x 5 3/4 x 5 3/4 in. (23.5 x 14.6 x 14.6 cm)

Edition of 100 plus 30 artist's proofs  
(0326)



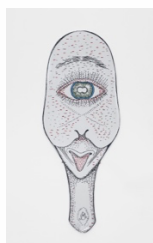
### Richard Hamilton

#### *Palindrome*, 1975

Lenticular acrylic, laminated on collotype on Chromolux 700 paper with pasted paper sticker

23 1/2 x 17 1/2 in. (59.7 x 44.5 cm)

Edition of 100 plus 11 artist's proofs  
(0328)



### Meret Oppenheim

#### *Der verliebte Polyphem*, 1974

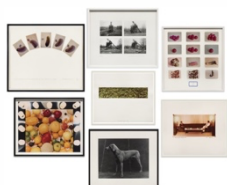
Screenprint (4 screens) on mirrored Altuglas

19 x 8 in. (48.3 x 20.3 cm)

Edition of 100 plus 30 artist's proofs  
(0331)



## MARIAN GOODMAN PROJECTS



### Portfolio

*Artists & Photographs*, 1975

7 photographic prints, and a brochure with preface by David Bourdon, in portfolio

Dimensions variable

Edition of 60 plus 21 artist's proofs

(1610)

*Including:*

John Baldessari, *Five pickles with Fingerprints*, 1975 (0021)

Bernd and Hilla Becher, *Coal Tipple Goodspring PA*, 1975 (0022)

Marcel Broodthaers, *La Soupe de Daguerre*, 1974 (0023)

Jan Dibbets, *Untitled*, 1975 (0024)

Van Elk, *Symmetry of diplomacy*, 1975 (0025)

Ed Ruscha, *Make Up Department*, 1975 (0027)

William Wegman, *Untitled (Man Ray)*, 1975 (0028)



### John Baldessari

*Five Pickles (with Fingerprints) in the Shape of a Hand*, 1975

5 color photographs mounted on German etching paper

20 x 24 in. (50.8 x 61 cm)

Edition of 60 plus 21 artist's proofs

(0021)



### Marcel Broodthaers

*La Soupe de Daguerre*, 1974

12 color photographs, mounted at the corners on paper, screenprint on mounted label

20 1/2 x 21 in. (52.1 x 53.3 cm)

Edition of 60 plus 15 artist's proofs

(0023)

## Back Space



### Sol LeWitt

*Forms Derived from a Cubic Rectangle #04*, 1990

Aquatint on Magnani Italia paper

Plate: 15 x 21 in. (38.1 x 53.3 cm)

Sheet: 20 x 26 in. (50.8 x 66 cm)

Frame: 22 1/2 x 28 1/2 x 1 5/8 in. (57.2 x 72.4 x 4 cm)

Edition of 20 plus 8 artist's proofs

(2764)



### Claes Oldenburg

*Screwarch Bridge (State II)*, 1979-1980

Hardground etching, spitbite sugarlift aquatint, and sanding on Arches roll paper

Plate: 23 3/4 x 50 3/4 in. (60.3 x 128.9 cm)

Sheet: 31 3/8 x 57 7/8 in. (79.7 x 147 cm)

Frame: 33 3/4 x 60 3/8 x 2 1/4 in. (85.8 x 153.5 x 5.7 cm)

Edition of 35 plus 12 artist's proofs

(1589)

23 GOLDEN SQUARE LONDON W1F 9JP

+44 (0) 20 7099 0088 MARIANGOODMAN.COM

## MARIAN GOODMAN PROJECTS



### Robert Indiana

*Decade Autoportraits #3*, 1980

One from set of 10; screenprint on Fabriano Classico paper

Sheet: 26 3/4 x 26 3/4 in. (67.9 x 67.9 cm)

Frame: 29 5/8 x 29 5/8 x 1 3/4 in. (75.2 x 75.2 x 4.5 cm)

Edition of 125

(0183)



### Robert Wilson

*Patio Sofa*, 1977

Photogravure on Arches Cover paper

Plate: 19 3/4 x 15 5/8 in. (50.2 x 39.7 cm)

Sheet: 27 x 22 1/4 in. (68.6 x 56.5 cm)

Frame: 29 1/8 x 24 3/8 x 1 5/8 in. (73.8 x 62 x 4 cm)

Edition of 15 plus 9 artist's proofs

(0587)



### Richard Artschwager

*Untitled*, 1971

Formica on wood, brass, glass, mirror, and rubberized horsehair

11 1/2 x 14 5/8 x 13 1/2 in. (29.2 x 37.1 x 34.3 cm)

Edition of 50

(0039)



### Sol LeWitt

*Forms Derived from a Cubic Rectangle #01*, 1990

Aquatint on Magnani Italia paper

Plate: 15 x 21 in. (38.1 x 53.3 cm)

Sheet: 20 x 26 in. (50.8 x 66 cm)

Frame: 22 1/2 x 28 1/2 x 1 5/8 in. (57.2 x 72.5 x 4 cm)

Edition of 20 plus 8 artist's proofs

(2766)

*The selection on view is subject to change.*