

MULTIPLES INC.

*Artists & Photographs*

March 20 – May 22, 2021



**Robert Rauschenberg**

*Two Reasons Birds Sing*, 1979.

Screenprint on paper, on fabric, on Arches roll stock paper

Image: 30 3/4 x 19 1/2 in. (78.1 x 49.5 cm); Sheet: 30 3/4 x 23 1/8 in. (78.1 x 58.7 cm); Frame: 33 1/2 x 25 3/4 x 1 7/8 in. (85.1 x 65.4 x 4.8 cm)

Edition of 100

(2069)



**Ger Van Elk**

*Conversation Piece* from "Missing Persons", 1976

A set of two chromogenic prints, mounted on board  
Sheet: 23 1/4 x 33 in. (59.1 x 83.8 cm) (each);

Frame: 24 1/2 x 31 x 1 1/2 in. (62.2 x 78.7 x 3.8 cm) (each)

Edition of 45 plus 10 artist's proofs

(0158)



**Jan Dibbets**

*Sea / Land*, 1974

Set of 2; 5 color photographs, mounted on rag paper

Sheet: 29 x 39 in. (73.7 x 99.1 cm) (each); Frame: 31 1/2 x 41 5/8 x 1 3/4 in. (80 x 105.7 x 4.4 cm) (each)

Edition of 50

(1383)



**Andy Warhol**

*Merce Cunningham II*, 1979

Screenprint on Japanese deacidified imported Florentine gift paper

Plate: 27 1/8 x 18 7/8 in. (68.9 x 47.9 cm); Sheet: 30 x 20 in. (76.2 x 50.8 cm); Frame: 32 5/8 x 22 3/4 x 1 1/2 in.

(82.9 x 57.8 x 3.8 cm)

Edition of 25

(0547)



**Peter Hutchinson**

*Stripes on Spots and Spots on Stripes*, 1974

Mounted color photographs with silkscreen

Sheet: 30 x 22 in. (76.2 x 55.9 cm); Frame: 32 x 24 1/4 x 1 1/2 in. (81.3 x 61.6 x 3.8 cm)

Edition of 50 plus 15 artist's proofs

(0176)



**Sol LeWitt**

*Windows*, 1980

72 photographs on Kodak Ektacolor, 74 RC Paper dry-mounted on Museum Mount Board

Photo: 3 1/4 x 3 1/4 in. (8.3 x 8.3 cm) (each); Sheet: 34 1/4 x 30 3/4 in. (87 x 78.1 cm); Frame: 35 x 31 5/8 x 1 3/4 in. (88.9 x 80.3 x 4.4 cm)

Edition of 20 plus 5 artist's proofs

(0258/M)



**Marcel Broodthaers**

*Comédie*, 1974

Offset lithograph on paper, mounted on board, from *Mirrors of the Mind*, 1975 portfolio

Sheet: 25 x 18 in. (63.5 x 45.7 cm); Frame: 26 x 19 x 1 in. (66 x 48.3 x 2.5 cm)

Edition of 120 plus 30 artist's proofs

(0327)



**Ger Van Elk**

*The Symmetry of Diplomacy, The Stanhope, New York*, 1975

Color photograph and screenprint mounted on rag board, from *Artists & Photographs*, 1975 portfolio

Sheet: 20 x 23 7/8 in. (50.8 x 60.6 cm); Frame: 21 3/4 x 25 3/4 x 1 1/2 in. (55.2 x 65.4 x 3.8 cm)

Edition of 60 plus 11 artist's proofs

(0025)



**Richard Hamilton**

*Palindrome*, 1974

Lenticular acrylic, laminated on collotype on Chromolux 700 paper with pasted paper sticker, from *Mirrors of the Mind*, 1975 portfolio

Sheet: 23 1/2 x 17 1/2 in. (59.7 x 44.5 cm); Frame: 29 1/4 x 23 1/8 x 1 1/2 in. (74.3 x 58.7 x 3.8 cm)

Edition of 100 plus 11 artist's proofs

(0328)



**William Wegman**

*Untitled*, 1975

Black and white photograph from *Artists & Photographs*, 1975 portfolio

Window: 10 1/4 x 13 1/4 in. (26 x 33.7 cm); Photo: 11 x 14 in. (27.9 x 35.6 cm); Frame: 15 1/4 x 18 1/4 x 1 1/4 in.

(38.7 x 46.4 x 3.2 cm)

Edition of 60 plus 21 artist's proofs

(0028)

# LIBRAIRIE MARIAN GOODMAN



## Ed Ruscha

*Makeup Dpt.*, 1975

Three color dye transfer print from *Artists & Photographs*, 1975 portfolio  
 Paper: 16 x 20 in. (40.6 x 50.8 cm); Frame: 18 1/2 x 22 1/2 x 1 3/8 in. (47 x 57.1 x 3.5 cm)  
 Edition of 60 plus 17 artist's proofs  
 (0027)



## Bernd & Hilla Becher

*Minnich Coal Co., Goodspring Mountains, Schuylkill County, Pennsylvania*, 1975

Gelatin silver print, 4 photographs mounted on rag board from *Artists & Photographs*, 1975 portfolio  
 Photos: 4 3/8 x 6 1/4 in. (11.1 x 15.9 cm) (each); Sheet: 16 x 19 1/2 in. (40.6 x 49.5 cm); Frame: 16 3/8 x 20 1/8 x 7/8 in. (41.6 x 51.1 x 2.2 cm)  
 Edition of 60 plus 21 artist's proofs  
 (0022)



## Jan Dibbets

*Untitled (Structure Piece)*, 1975

5 color photographs, mounted on Rag paper from *Artists & Photographs*, 1975 portfolio  
 Sheet: 20 x 24 in. (50.8 x 61 cm); Frame: 21 5/8 x 26 x 1 1/2 in. (54.9 x 66 x 3.8 cm)  
 Edition of 60 plus 16 artist's proofs  
 (0024)



## John Baldessari

*Five Pickles (with Fingerprints) in the Shape of a Hand*, 1975

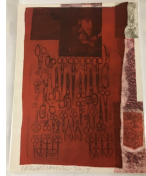
5 color photographs mounted on German etching paper, from *Artists & Photographs*, 1975 portfolio  
 Sheet: 20 x 24 in. (50.8 x 61 cm); Frame: 21 3/8 x 25 1/4 x 1 3/8 in. (54.3 x 64.1 x 3.5 cm)  
 Edition of 60 plus 21 artist's proofs  
 (0021)



## Marcel Broodthaers

*La Soupe de Daguerre*, 1974

Color photo collage from *Artists & Photographs*, 1975 portfolio  
 Sheet: 20 3/4 x 20 1/4 in. (52.7 x 51.4 cm); Frame: 21 3/8 x 20 7/8 x 1 1/2 in. (54.3 x 53 x 3.8 cm)  
 Edition of 60 plus 15 artist's proofs  
 (MG/0023)



## Robert Rauschenberg

*More Distant Visible Part of the Sea*, 1979

Screenprint on paper, on fabric, on Arches Cover paper  
 Sheet: 30 1/2 x 23 in. (77.5 x 58.4 cm), Frame: 33 1/4 x 25 3/4 x 1 1/2 in. (84.5 x 65.4 x 3.8 cm)  
 Edition of 100  
 (0420)



## Joseph Beuys

*Mirror Piece*, 1975

Glass flask, mirrored interior with iodine crystal, exterior successively lacquered in silver, copper, and brown; offset lithograph on card, "How to explain the iodine bottle to the Hares," in cylindrical cardboard box covered with screenprinted kraft paper, from *Mirrors of the Mind*, 1975 portfolio  
 Bottle: 7 1/2 x 4 1/8 x 4 1/8 in. (19.1 x 10.5 x 10.5 cm); Box: 9 1/4 x 5 3/4 x 5 3/4 in. (23.5 x 14.6 x 14.6 cm)  
 Edition of 100 plus 30 artist's proofs  
 (0326)

Artists & Photographs Box



**Various**

*Artists & Photographs*, 1970

19 artist's publications and a brochure with text by Lawrence Alloway, in cardboard box, with cover designed by Dan Graham

13 1/4 x 13 1/4 x 3 3/4 in. (33.7 x 33.7 x 9.5 cm)

Edition of 1200

(6793)



**Christo**

*Packed Tower, Spoleto, Italy*, 1968/1970

Unsigned, unnumbered

Offset lithograph on paper, 9 sheets in cardboard box, from the *Artists & Photographs Box*

Cards: 10 x 7. 3/4 in. (25.4 x 19.7 cm); Box: 10 1/2 x 8 1/2 x 3/4 in. (26.67 x 21.59 x 1.9 cm)

Edition of 1200

(14777)



**Tom Gormley**

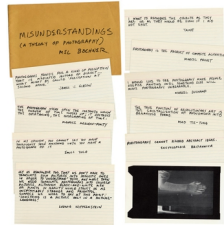
*Red File Cabinet*, 1970

Cardboard, lightbulb, electric cord

4 x 3 x 1 3/4 in. (10.2 x 7.6 x 4.4 cm)

Edition of 1200

(24681)



**Mel Bochner**

*Misunderstandings (A Theory of Photography)*, 1970

Unsigned, unnumbered

Offset lithograph on 10 preprinted notecards in printed envelope

Notecards: 4 3/4 x 8 in. (12.1 x 20.3 cm) (each) ;

Envelope: 5 15/16 x 9 in. (15.1 x 22.9 cm)

Edition of 1200

(14765)

**Jan Dibbets**

*Perspective Correction (5 Poles)*, 1967/1970

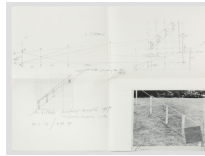
Unsigned, unnumbered

Offset lithograph on paper, folded twice, from the *Artists & Photographs Box*

Folded: 9 7/8 x 12 7/8 in. (25.1 x 32.7 cm); Open: 19 5/8 x 25 1/2 in. (49.8 x 64.8 cm)

Edition of 1200

(14766)



**Dan Graham**

*Two Parallel Essays: Photographs of Motion / Two Related Projects for Slide Projectors*, 1970

Unsigned, unnumbered

Book; offset lithograph on paper, 12 pages, softcover, stapled, from the *Artists & Photographs Box*

11 x 7 in. (27.9 x 17.8 cm)

Edition of 1200

(14767)



**Douglas Huebler**

*Location Piece #2, New York City - Seattle, Washington*, 1969

Unsigned, unnumbered

Offset lithograph on paper, 19 sheets in printed envelope, from the *Artists & Photographs Box*

Sheet: 7 x 7 in. (17.8 x 17.8 cm) (each); Envelope: 7 1/2 x 7 1/2 in. (19.1 x 19.1 cm)

Edition of 1200

(14768)



**Allan Kaprow**

*Pose: Carrying Chairs through the City, Sitting Down Here and There, Photographed, Pix Left on Spot, Going On*, 1970

Unsigned, unnumbered

Offset lithograph on board, 7 sheets in printed manila envelope, from the *Artists & Photographs Box*

Sheet: 10 3/4 x 7 7/8 in. (27.3 x 20 cm) (each);

Envelope: 12 x 9 in. (30.5 x 22.9 cm)

Edition of 1200

(14769)



**Michael Kirby**

*Pont Neuf: The Localization of a Tetrahedron in Space*, 1970

unsigned, unnumbered

Offset lithograph on paper, 5 sheets, folded, in printed envelope, from the *Artists & Photographs Box*

Image sheet: 27.9 x 32.4 cm (each); Text sheet: 31.1 x 21.3 cm; Envelope: 30.5 x 22.5 cm

Edition of 1200

(14776)



**Joseph Kosuth**

*Notebook on Water 1965-66*, 1970

unsigned, unnumbered

Black and white offset print on paper, 15 sheets in printed envelope, from the *Artists & Photographs Box*

Sheet: 9 x 11 in. (22.9 x 27.9 cm) ; Envelope: 9 1/2 x 12 in. (24.1 x 30.5 cm) ; Small sheet: 5 1/8 x 5 7/8 in. (13 x 14.9 cm) ; Radiator sheet: 8 1/2 x 10 7/8 in. (21.6 x 27.6 cm) ; Handwritten sheet: 8 1/8 x 11 1/2 in. (20.6 x 29.2 cm) ; Map folded: 10 7/8 x 7 1/8 in. (27.6 x 18.1 cm) ; Map open: 14 1/4 x 21 5/8 in. (36.2 x 54.9 cm)

Edition of 1200

(23532)

# LIBRAIRIE MARIAN GOODMAN



## Sol LeWitt

*Schematic Drawing for Muybridge II*, 1964/1970  
Unsigned, unnumbered  
Offset lithograph on paper, folded, in slipcase, from the *Artists & Photographs Box*  
5 1/8 x 12 5/8 in. (13 x 32.1 cm)  
Edition of 1200  
(14770)



## Richard Long

*Rain Dance. August 24, 1969. The Rift Valley, East Africa. (A 3/4 Mile Travelling Piece Documented by 4 Photographs)*, 1970  
Unsigned, unnumbered  
Offset lithograph on board (recto and verso), from the *Artists & Photographs Box*  
8 x 12 in. (20.3 x 30.5 cm)  
Edition of 1200  
(14771)



## Robert Morris

*Continuous Project Altered Daily*, 1969  
unsigned, unnumbered  
Offset lithograph on paper, folded, from the *Artists & Photographs Box*  
Folded: 4 x 12 in. (10.2 x 30.5 cm); Open: 68 x 12 in. (172.7 x 30.5 cm)  
Edition of 1200  
(14772)



## Bruce Nauman

*LAAIR*, 1970  
unsigned, unnumbered  
Book, 4 color offset print on paper, 8 pages, softcover, stapled, from the *Artists & Photographs Box*  
30.5 x 30.5 cm  
Edition of 1200  
(14775)



## Dennis Oppenheim

*Flower Arrangement for Bruce Nauman*, 1969  
unsigned, unnumbered  
Offset lithograph on paper, 8 pages, folded, with cover, from the *Artists & Photographs Box*  
Folded: 16.8 x 24.4 cm; Open: 16.8 x 195.6 cm  
Edition of 1200  
(14773)



## Robert Rauschenberg

*Revolver*, 1969  
unsigned, unnumbered  
Screenprint on acrylic, 5 disks, acrylic base, instruction sheet, in envelope, from the *Artists & Photographs Box*  
Overall: 9 1/8 x 9 in. (23.2 x 22.9 cm); Disks: 8 7/8 x 8 7/8 in. (22.5 x 22.5 cm) (each), Plexiglas base: 3 x 2 1/2 in. (7.6 x 6.3 cm); Envelope: 9 3/8 x 9 3/8 in. (23.8 x 23.8 cm)  
Edition of 1200  
(1872)



## Ed Ruscha

*Babycakes with Weights*, 1970  
Book, offset lithograph on paper, 52 pages, wrappers with green flocked lettering, bound with pink satin ribbon threaded through 2 drilled holes and tied in a bow  
7 1/2 x 6 x 1/8 in. (19.1 x 15.2 x 0.3 cm)  
Edition of 1200  
(2236)



## Robert Smithson

*Torn Photograph from the Second Stop (Rubble): Second Mountain of Six Stops on a Section*, 1970  
4-color offset lithograph on paper, torn in 4 pieces, from the *Artists & Photographs Box*  
21 1/2 x 21 1/2 in. (54.6 x 54.6 cm)  
Edition of 1200  
(24620)



## Bernar Venet

*Exploited Subjects*, 1970  
unsigned, unnumbered  
Book, offset lithograph on board, 16 pages, ring-bound, from the *Artists & Photographs Box*  
7 1/4 x 7 1/4 x 1/2 in. (18.4 x 18.4 x 1.3 cm)  
Edition of 1200  
(23400)



## Andy Warhol

*Portraits*, 1970  
Unsigned, unnumbered  
Set of 8 prints and colophon in plastic sleeve, 4 color and black and white offset print, from the *Artists & Photographs Box*  
Plastic folder: 12 x 9 3/4 in. (30.5 x 24.8 cm); Colophon: 11 x 8 1/2 in. (27.9 x 21.6 cm); Self-portrait: 9 x 9 1/4 in. (22.9 x 23.5 cm); Texan: 9 1/2 x 10 in. (24.1 x 25.4 cm); Marilyn: 7 3/8 x 11 1/2 in. (18.7 x 29.2 cm); Cow: 11 1/2 x 7 1/8 in. (29.2 x 18.1 cm); Mona Lisa: 11 1/4 x 7 5/8 in. (28.6 x 19.4 cm); Elvis: 11 3/8 x 8 1/4 in. (28.9 x 21 cm); Jackie: 11 1/4 x 9 1/4 in. (28.6 x 23.5 cm); Cleopatra: 11 7/8 x 9 1/2 in. (30.2 x 24.1 cm)  
Edition of 1200  
(23401)