

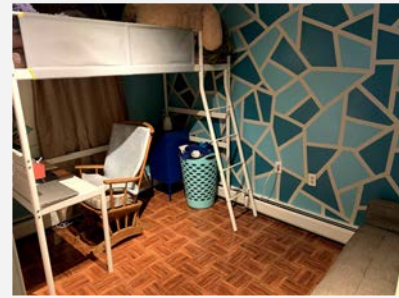
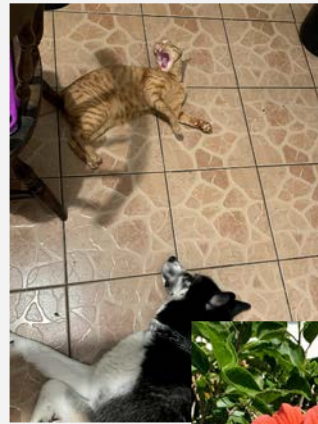
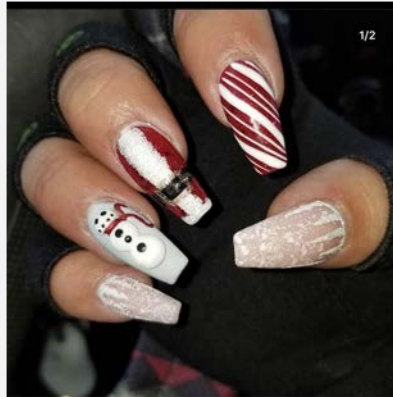
**3D Self Portrait: A Grid or  
A Deconstructed Grid w/  
Integrated Ordering  
Principles Inspired by Sol  
LeWitt, Multiples, Inc. for  
Marian Goodman Gallery**

**Created by: Maggie  
Martinez**

# Artist Mission Statement:

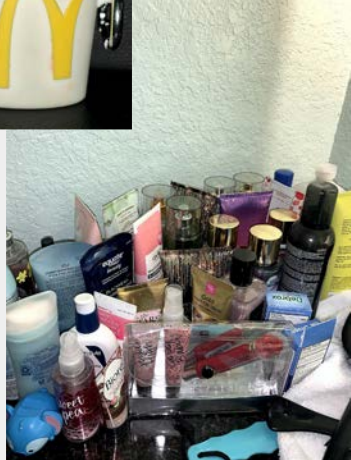
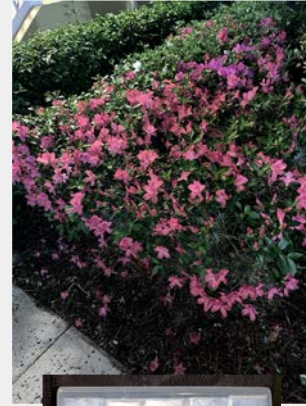
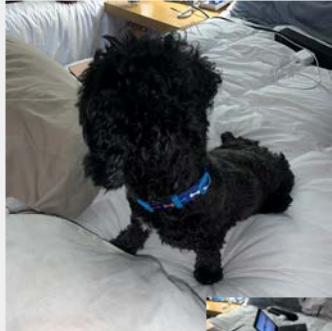
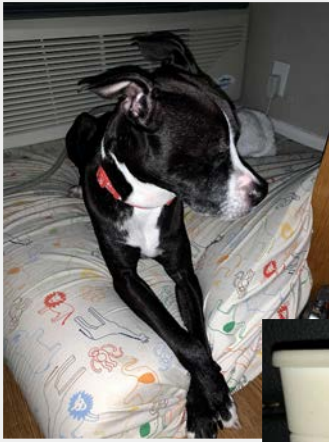
The name of this project is, “The Pieces that Make Up Me.” The purpose of this project was to create a structure of some sort that described what made me as a person. I wanted to make something that would be a symbol that symbolizes more than one thing. Something that one could look at and have so many questions about. The symbol that I chose for the structure was a 3D puzzle. It would be puzzle pieces put together in a way that most people would find weird or amazing/unique. The puzzle piece is most special to me because for the autistic community, a puzzle piece represents them. My brother has autism. He is the main factor that plays the biggest role in my life. Everything I do, every decision that I make is for him. Therefore, this is also a tribute to him and how much he’s impacted my life. The design process was a bit rough. I wasn’t able to pinpoint exactly how I wanted the piece to look. Different images and ideas would pop up in my head but I couldn’t draw them on a piece of paper to see if it would actually work. So, I gave up. I tried to go around using a puzzle piece and just sticking to something simple. But, that wasn’t me. I don’t do simple. Hence, where I finally found the idea that I knew I could accomplish but would take me some time. I came up with a structure that would have different puzzle pieces with different locations or images of events that have happened because these are all aspects of who I am. Once I finished, I couldn’t be happier with my outcome. I created a piece that was unique, confusing yet put together and magical!

# 30 Images for Autobiography:

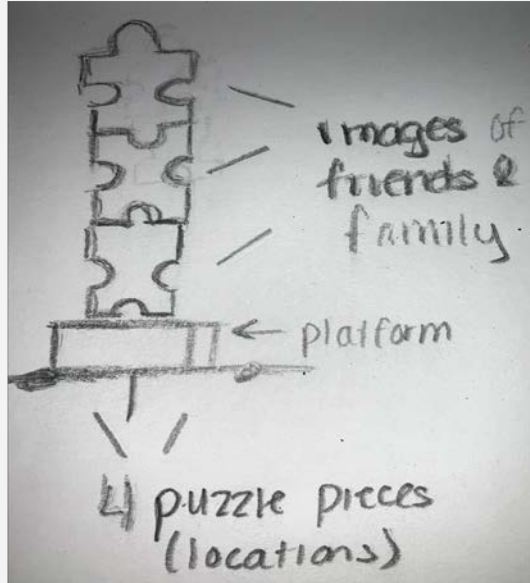




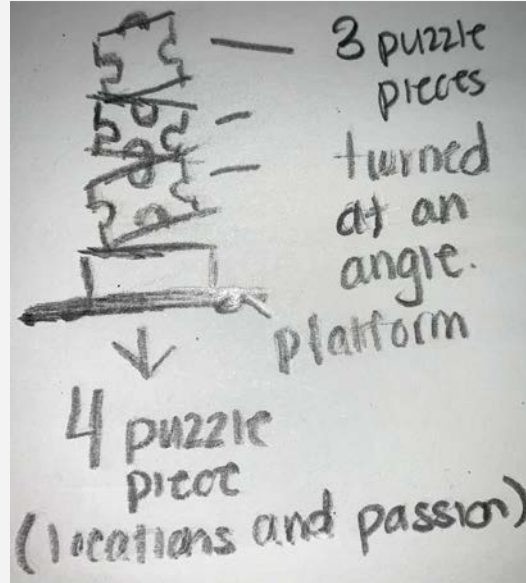
# Continuation..



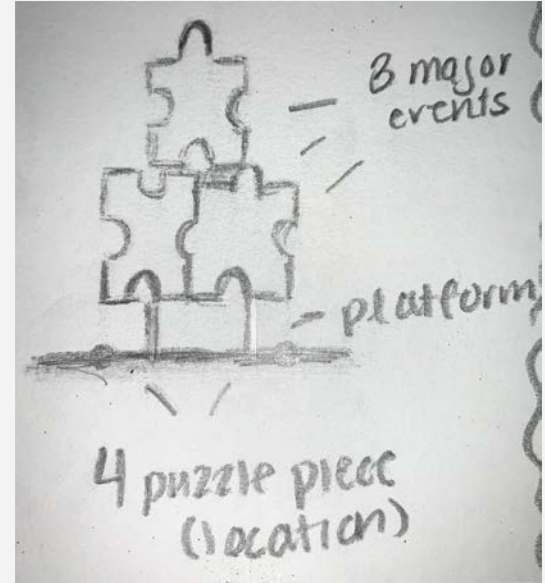
# Three Vignettes:



The first idea- 3 puzzle pieces stacked on top of each other held up by a platform and 4 puzzle pieces representing important locations as the grid

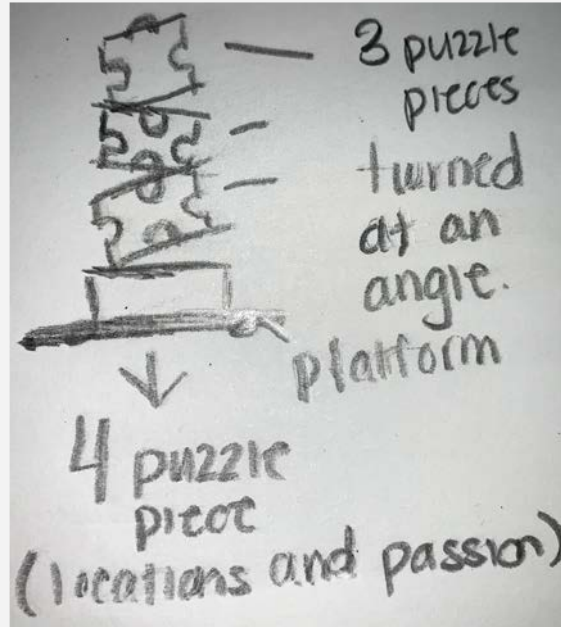


The second idea- 3 puzzle pieces turned at an angle, held up by a platform with 4 puzzle pieces showing locations and my passion (career-wise)



The third idea- 3 puzzle pieces demonstrating 3 major events held up by a platform with 4 puzzle pieces layed down showing significant locations

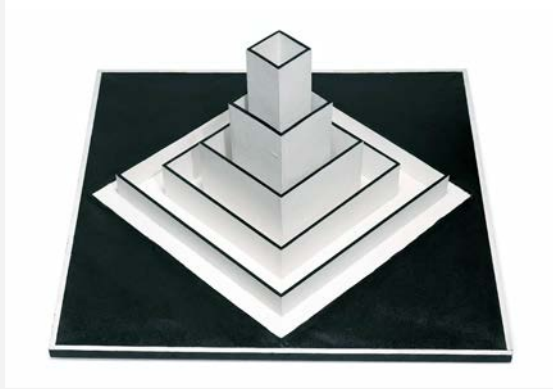
# Selected Vignette:



This is my selected vignette. It's composed of 3 puzzle pieces turned at an angle, held up by a platform with 4 puzzle pieces showing locations and my passion (career-wise).



# Inspirational Images:



<https://www.sfmoma.org/artwork/FC.741/>

By: Sol LeWitt



By: Andy Warhol

<https://www.kimweissenborn.com/single-post/2017/02/28/andy-warhol-handprints>



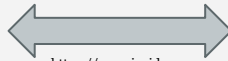
By: Sol LeWitt

<https://americanartsl.edu/artwork/color-bands-78779>

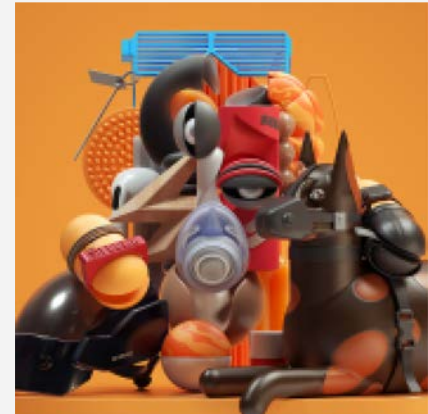


3D Model Character Illustrations by Omar Aqil

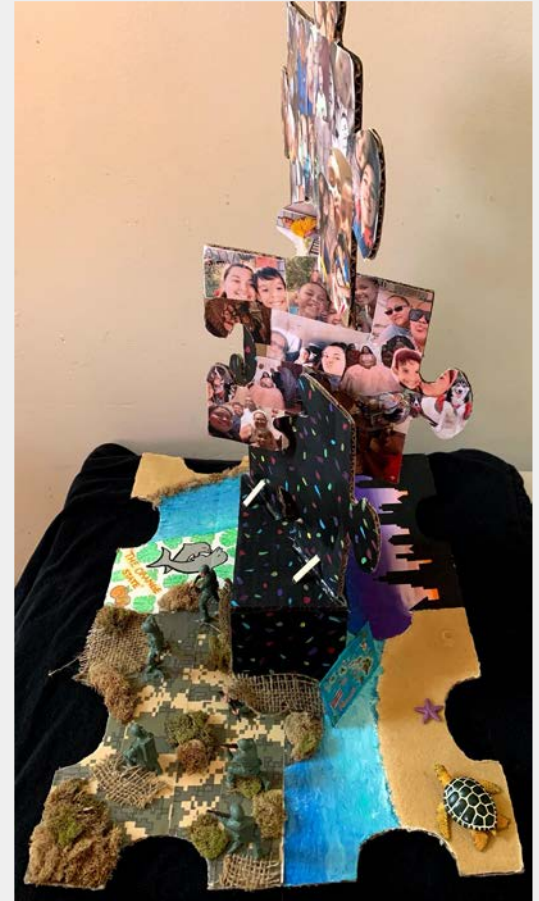
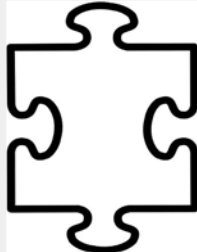
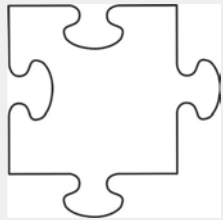
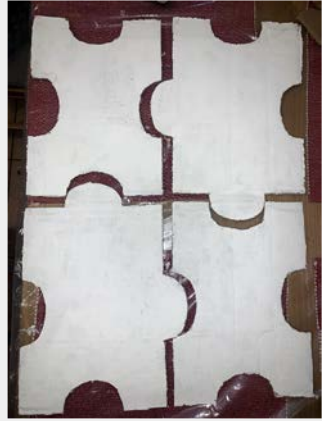
By: Omar Aqil



<https://www.insider.com/artist-turns-picasso-art-into-3d-illustrations-2019-1>



# Model Making Process:







**Maggie Martinez**

# Maggie Martinez

# Artist Statement

The name of this project is, “The Pieces that Make Up Me.” The purpose of this project was to create a 3 Dimensional abstract structure that described what makes me as a person. I wanted to make something that would symbolize more than one thing. Something that one could look at and wonder about it. The symbol that I chose for the structure was a 3D puzzle. It would be puzzle pieces put together in a way that most people would find weird or amazingly unique.

The puzzle piece is most special to me because it represents the Autism community. My brother has autism. He is the main factor that plays the biggest role in my life. Everything I do, every decision that I make is for him. Therefore, this sculpture is also a tribute to him and how much he has impacted my life. The design process was a bit rough. I wasn’t able to pinpoint exactly how I wanted the piece to look. Different images and ideas would pop up in my head but I couldn’t draw them on a piece of paper to see if it would actually work. So, I gave up. I tried to use puzzle pieces to make a statement of Autism Awareness. But, that wasn’t me. I don’t do simple. Hence, when I finally thought of the idea that I knew I could accomplish but would take me some time to complete. I came up with a structure that has different puzzle pieces representing different locations or images of events that I have experienced. These also contributed to the characteristics that make me up.

The base of the sculpture is based on a quadrant grid, inspired by Sol LeWitt’s Grid Photography book that he had published as an art piece. One corner of the quadrant represents my interest in being dedicated as a Naval Officer. The quadrant with the turtles and beach scene represent my dearest friend who resides in Hawaii. She’s been there for me at my lowest points and so I appreciate her a lot. The other two corners, one with the New York cityscape and the other being the Florida beach, represents my upbringing from the North and South of the Eastern Coast. All four corners of my quadrant are anchored by my monumental commitment to the people of my life. Once I finished, I couldn’t be happier with my outcome. I created a piece that was unique, confusing, yet put together and magical!