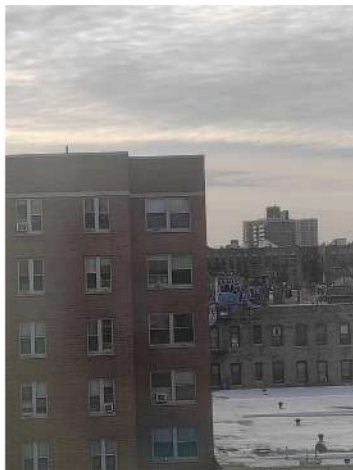


# 3D INSTALLATION PROJECT

By : Annabelle Arthur

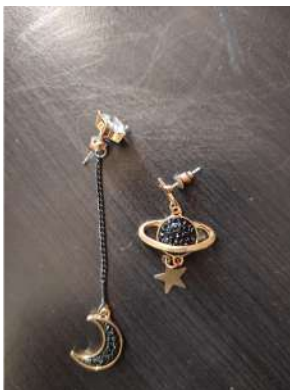


# IMAGES

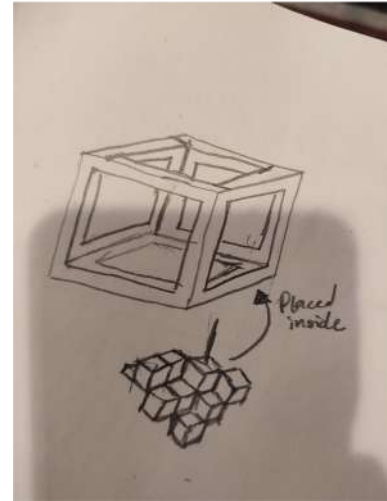
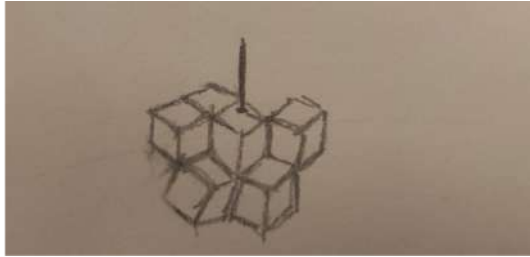
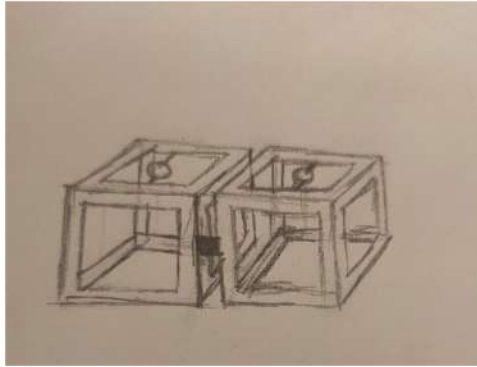




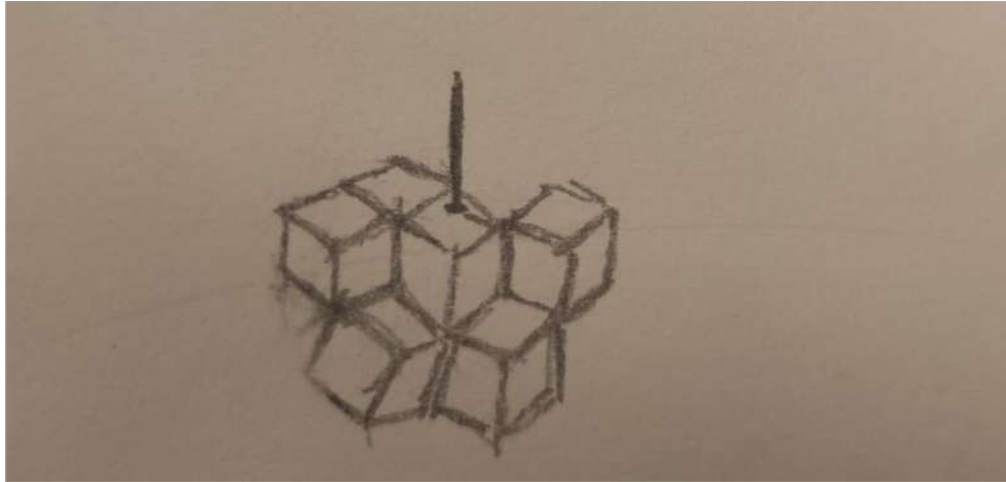




# VIGNETTE SKETCHES

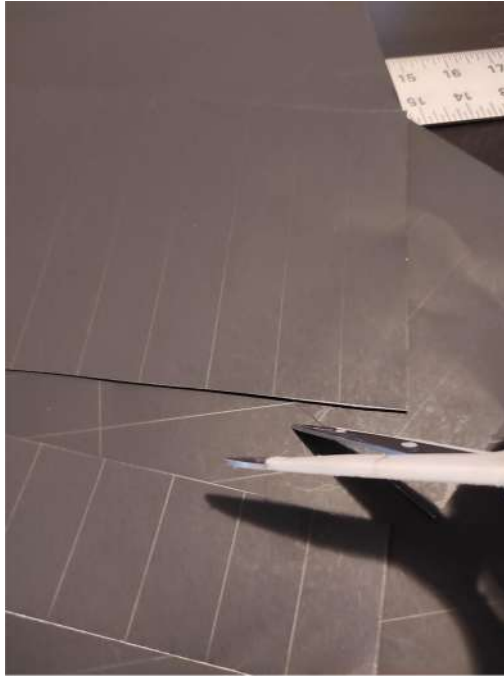
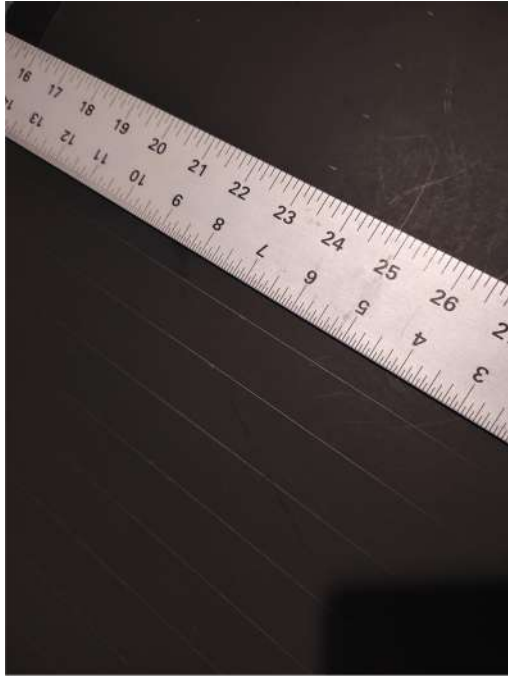


# DESIGN CHOSEN

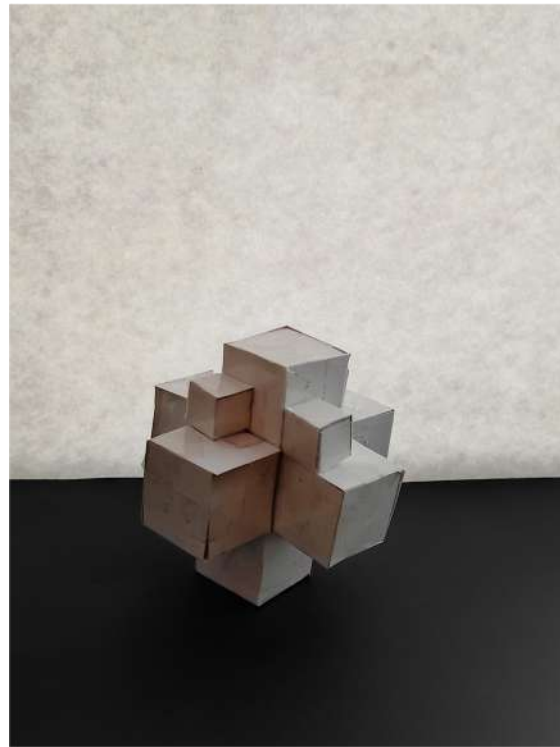
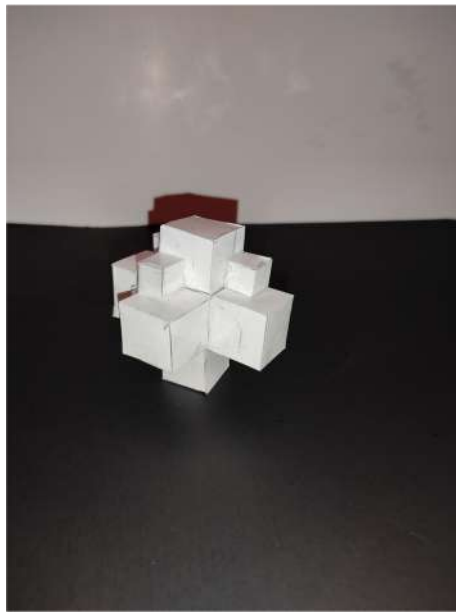
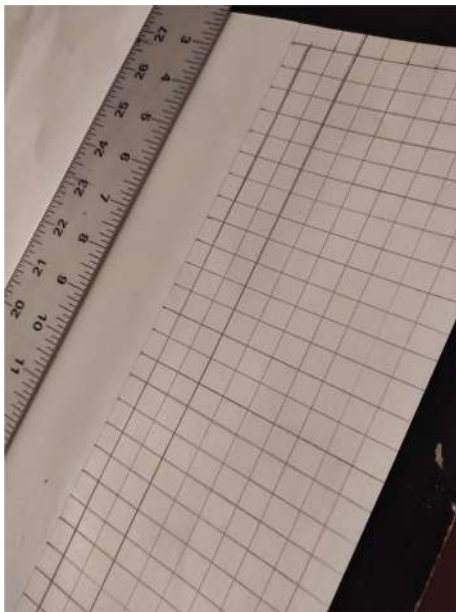




# PROCESS - DAY 1

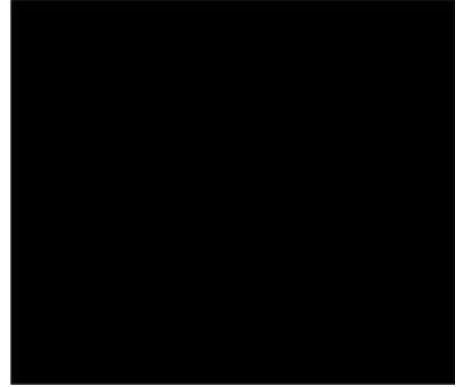
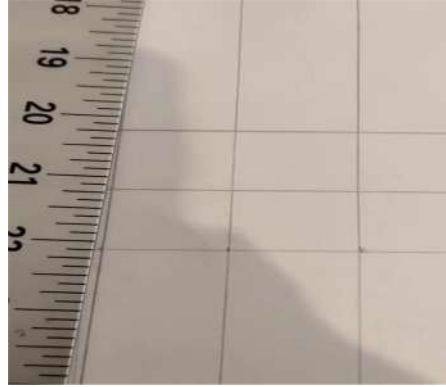
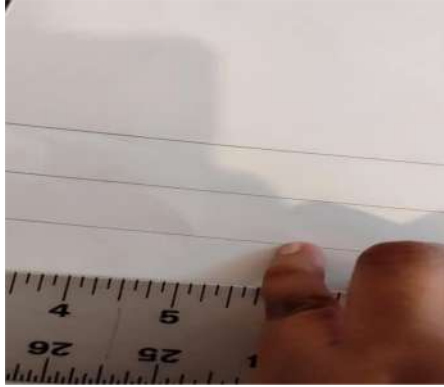
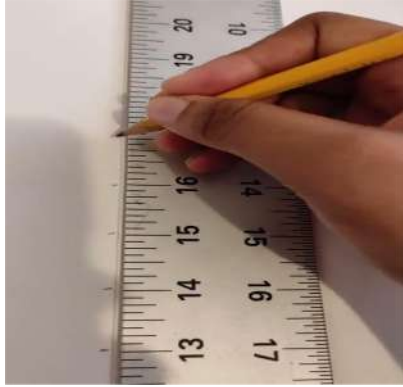


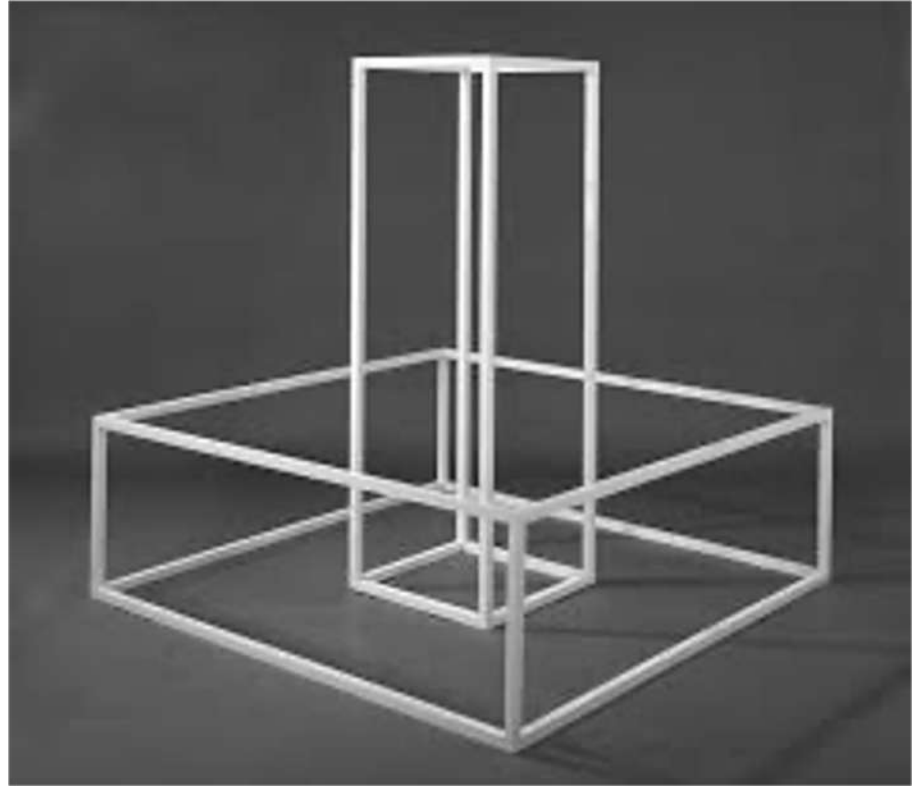
# Process Day 2





# Process (Videos)

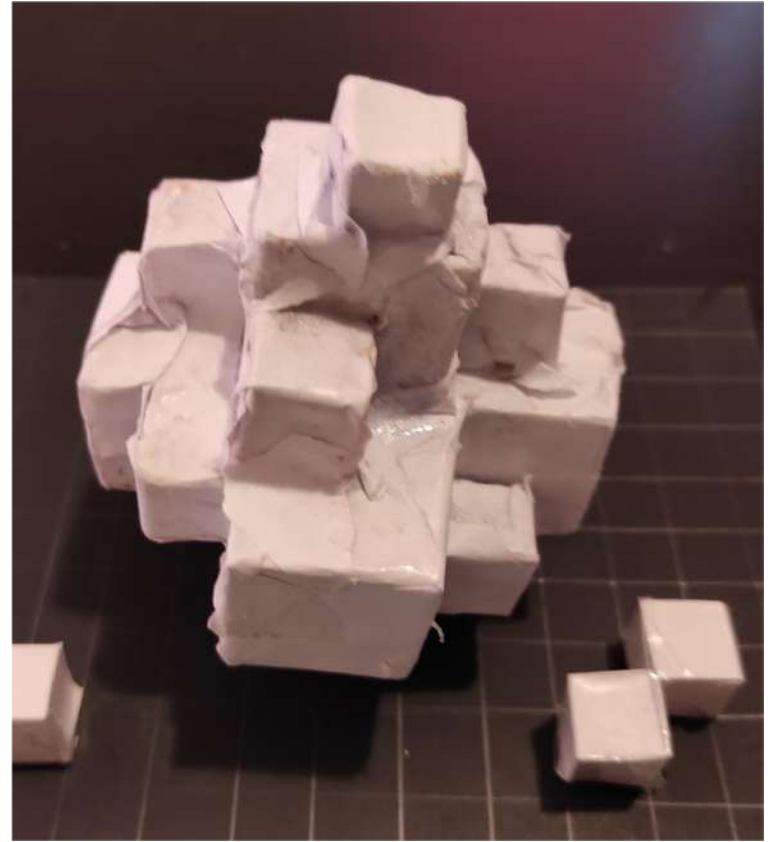




INSPIRATION - SOL LEWITT

# Model Installation





**Annabelle Arthur**



# Anabelle Arthur

# Artist Statement

For our 3D Abstract Self Portrait Project I wanted to create a design that would describe how the simplest things could mean so much more. I therefore decided to create a minimal yet intricate geometrical design. In this design, there are tiny cubes that are joined together to form a pile and a square base at the bottom. I chose to use cubes for my geometric design because they are a simple 3D shape. According to my research, cubes can represent the truth because they are the same on all four sides.

I had been inspired by Sol Lewitt who also creates minimalistic and geometric designs as well. Sol Lewitt also creates modular sculptures which I found interesting and decided to take things further by adding mass to my objects. The materials I used were a pencil, T-square, Scissors, Tape, a black and white board, and paper mache. I also incorporated different ordering principles like axis, hierarchy and datum.