

MARIAN GOODMAN GALLERY

Allan Sekula
Photography, A Wonderfully Inadequate Medium
March 14 – May 18, 2019

Entrance



Long Beach Notes, 1980
4 parts; commercial postcards on cardboard,
dymo type
Frame: 12 1/2 x 15 3/8 x 1 1/2 in. (31.8 x 39 x
3.8 cm) (each)
(22097)

North Main Gallery



*Talk given by Mr. Fred Lux at the Lux Clock
Co. manufacturing plant in Lebanon,
Tennessee, on Wednesday, September 15,
1954, 1974*
Single channel video, black and white,
sound
25 min. 30 sec.
(22100)

California Stories (1973—1975)



*Guns & Butter (El Toro, December 1975),
1975/2012*
2 archival pigment prints
Frame: 30 x 40 x 1 1/2 in. (76.2 x 101.6 x
3.81 cm)
(22094)



*Attempt to correlate social class with elevation
above main harbor channel (San Pedro, July
1975), 1975-2011*
6 archival pigment prints
Print: 11 1/8 x 14 1/8 in. (28 x 36 cm) (each)
Frame: 40 x 40 x 1 1/2 in. (101.6 x 101.6 x 3.81
cm)
Edition of 5 plus 1 artist's proof
(22087)



*Red Squad (San Diego, 20 January 1973),
1973/2012*
6 archival pigment prints
Frame: 36 x 72 1/8 x 1 1/2 in. (91.4 x 182.9
x 3.81 cm)
(22090)



Cliffhanger (San Pedro, July 1975), 1975/2011
6 archival pigment prints and text
Frame: 36 x 72 1/8 x 1 1/2 in. (91.4 x 182.9 x 3.81
cm)
(22091)



*Vietnamese Village (San Pedro, July 1975),
1975/2011*
5 archival pigment prints
Frame: 36 x 72 1/8 x 1 1/2 in. (91.4 x 182.9
x 3.81 cm)
(22092)



Surf Movie (San Diego, October 1973), 1973/2012
6 archival pigment prints
Frame: 36 x 72 1/8 x 1 1/2 in. (91.4 x 182.9 x 3.81
cm)
(22093)

Performance under Working Conditions (1973)



Performance under working conditions, 1973
Single channel video, black and white, sound
21 min.
(22099)

This Ain't China (1974)



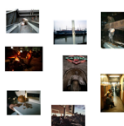
This ain't China, 1974
Maquette, 35mm silver gelatin and color
contact sheet prints mounted on 15 boards
Frame: 6 x 20 x 1 1/2 in. (15.2 x 50.8 x 3.81
cm) (each)
(22095)



This Ain't China: A Photonovel, 1974
29 silver gelatin prints, 10 color photographs, 5
booklets, 2 chairs
5 frames: 22 7/8 x 29 x 1 1/2 in. (58 x 73.5 x 3.81
cm); 3 frames: 31 3/8 x 27 1/2 x 1 1/2 in. (79.7 x 70 x
3.81 cm); 1 frame: 44 1/4 x 52 x 1 1/2 in. (112.5 x
132 x 3.81 cm)
(22096)

South Main Gallery

Fish Story (1989—1995)



Fish Story: Loaves and Fishes (Chapter 2), 1993
8 cibachrome prints, 2 text panels
5 frames: 24 3/4 x 31 1/4 x 1 3/4 in. (62.9 x 79.4 x
4.5 cm) (each); 3 frames: 23 1/4 x 32 3/4 x 1 3/4
in. (59.2 x 83.2 x 4.5 cm) (each)
Panels: 40 x 28 x 1/2 in. (101.6 x 71.12 x 1.2 cm)
(each)
(22101)

MARIAN GOODMAN GALLERY



Model simulating the movement of the sea & pornographic scrimshaw
 Diptych; cibachrome prints
 Frame: 30 3/4 x 37 1/2 x 2 1/2 in. (78.1 x 95.3 x 6.4 cm) (each)
 (22103)



The rechristened Exxon Valdez awaiting sea trials after repairs. National Steel and Shipbuilding Company. San Diego harbor & "Lead Fish," variant of a conference room designed for the Chiat/Day advertising agency. Architect: Frank Gehry
 Diptych; cibachrome prints
 Right frame: 28 7/8 x 39 7/8 x 2 1/2 in. (73.3 x 101.3 x 6.35 cm). Left frame: 28 7/8 x 35 1/8 x 2 1/2 in. (73.3 x 89 x 6.35 cm)
 (22104)

Video Room



The Lottery of the Sea, 2006
 Video, color, sound
 2 hrs. 59 min. 27 sec.
 (22116)

Corridor



Dear Bill Gates, 1999
 Cibachrome print, typewritten letter, color photocopy of Winslow Homer's "Lost on the Grand Banks"
 Photo frame: 29 1/8 x 106 5/8 x 3 in. (73.8 x 270.8 x 7.6 cm)
 Letter frame: 15 5/8 x 12 1/4 x 2 in. (39.7 x 31 x 5 cm)
 Photocopy: 11 3/4 x 16 1/2 in. (29.7 x 42 cm)
 (22105)



Reagan Tape (in collaboration with Noël Burch), 1981
 Video, sound
 10 min.
 (22098)

Stairs



Europa, 2011
 Chromogenic print
 Frame: 49 1/4 x 72 1/2 x 2 1/2 in. (125 x 184 x 6.35 cm)
 (22118)

Upper North Video Room

Fish Story (1989—1995)



Fish Story: Walking on Water (Chapter 9), 1990/1995
 80 35mm slides at 13 sec. intervals
 Transparencies: 1 3/4 x 2 3/8 in. (4.5 x 6 cm) (each)
 Projection dimensions variable
 (22102)



Fish Story: Dismal Science (Chapter 8), 1989/1992
 80 35mm slides at 13 sec. intervals
 Projection dimensions variable
 (22228)

Upper Main Gallery

Black Tide / Marea Negra (2002—2003)



Black Tide/Marea Negra, 2002/2003
 20 color photographs in 10 frames, text
 Dimensions variable
 (22088, 22107, 22108, 22109, 22110, 22111, 22112, 22113, 22114, 22115)



Eyes closed assembly line, 2008/2010
 Dye deconstruction/lfochrome transparency in light box
 Lightbox: 39 x 57 1/8 x 5 in. (99 x 145 x 12.7 cm)
 (22117)

Upper South Video Room



Prayer for the Americans 1, 1999/2004
 39 medium format color transparencies, projected continuously at 12 sec. intervals, repeated twice. Hasselblad projector and timer
 Transparencies: 1 5/8 x 2 1/8 in. (4 x 5.5 cm) (each)
 Projection dimensions variable
 (22106)