

JULIE MEHRETU

Our Days, Like a Shadow (a non-abiding hauntology)

14 April – 6 June 2026
385 Broadway, New York, NY 10013

First Floor

North Gallery (clockwise from entrance)



Julie Mehretu / Nairy Baghramian
TRANSpaintings (night seam) / Upright Brackets, 2024
Ink and acrylic on monofilament polyester mesh in an aluminum sculpture
Dimensions variable
Painting: 96 × 120 in (243.8 × 304.8 cm)
(29430)



Julie Mehretu
Black Monolith (after Atopolis: For Édouard Glissant by Jack Whitten), 2024-2026
Ink and acrylic on canvas
144 × 180 in (365.8 × 457.2 cm) (overall)
144 × 90 in (365.8 × 228.6 cm) (each)
(31109)



Julie Mehretu / Nairy Baghramian
TRANSpaintings (the substanceless blue pour of tor and distances) / Upright Brackets, 2025-2026
Ink and acrylic on monofilament polyester mesh in an aluminum sculpture
Dimensions variable
Painting: 120 × 96 in (304.8 × 243.8 cm)
(31259)

First Floor

North Gallery Annex (clockwise from entrance)



Julie Mehretu
The Wine-Dark-Sea, 2023-2026
Ink and acrylic on canvas
120 × 120 in
304.8 × 304.8 cm
(31258)

Second Floor

South Gallery (clockwise from entrance)



Julie Mehretu / Nairy Baghramian
TRANSpaintings (blue) / Upright Brackets, 2024
Ink and acrylic on monofilament polyester mesh in an aluminum sculpture
Dimensions variable
Painting: 72 × 60 in (182.9 × 152.4 cm)
(29031)



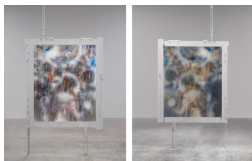
Julie Mehretu
TRANSpaintings (light writing) / Upright Brackets, 2024
 Ink and acrylic on monofilament polyester mesh in an aluminum sculpture
 Dimensions variable
 Painting: 72 × 60 in (182.9 × 152.4 cm)
 (29029)



Julie Mehretu / Nairy Baghramian
TRANSpaintings (mouth flight) / Upright Brackets, 2024
 Ink and acrylic on monofilament polyester mesh in an aluminum sculpture
 Dimensions variable
 Painting: 72 × 60 in (182.9 × 152.4 cm)
 (29033)



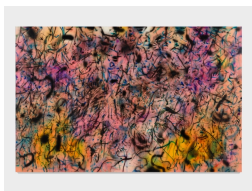
Julie Mehretu / Nairy Baghramian
TRANSpaintings (Omi Obini) / Upright Brackets, 2024-2026
 Ink and acrylic on monofilament polyester mesh in an aluminum sculpture
 Dimensions variable
 Painting: 72 × 60 in (182.9 × 152.4 cm)
 (31272)



Julie Mehretu / Nairy Baghramian
TRANSpaintings (ecto) / Upright Brackets, 2024
 Ink and acrylic on monofilament polyester mesh in an aluminum sculpture
 Dimensions variable
 Painting: 72 × 60 in (182.9 × 152.4 cm)
 (29030)

Second Floor

North Gallery (clockwise from entrance)



Julie Mehretu
Our Waste Places, 2024-2026
 Ink and acrylic on canvas
 108 × 168 in (274.3 × 426.7 cm)
 (31263)



Julie Mehretu / Nairy Baghramian
TRANSpaintings (halfcore/halfwit) / Upright Brackets, 2024
 Ink and acrylic on monofilament polyester mesh in an aluminum sculpture
 Dimensions variable
 Painting: 72 × 60 in (182.9 × 152.4 cm)
 (29032)

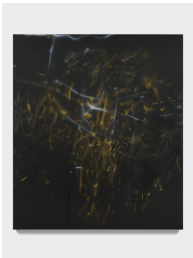


Julie Mehretu / Nairy Baghramian
TRANSpaintings (gay guerrilla) / Upright Brackets, 2024
 Ink and acrylic on monofilament polyester mesh in an aluminum sculpture
 Dimensions variable
 Painting: 108 × 84 in (274.3 × 213.4 cm)
 (29431)

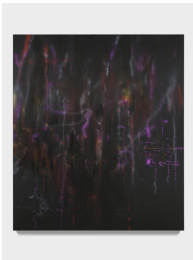


Julie Mehretu and Nairy Baghramian
TRANSpaintings (Angelus Novus) / Upright Brackets,
 2025-2026
 Ink and acrylic on monofilament polyester mesh in an aluminum sculpture
 Dimensions variable
 Painting: 72 × 60 in. (182.9 × 152.4 cm)
 (31262)

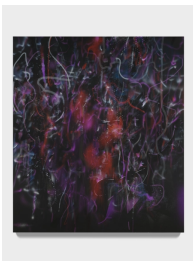
Third Floor
 South Gallery (clockwise from entrance)



Julie Mehretu
 Inside Totality
(what the lungs cannot hold), 2025-2026
 Ink and acrylic on canvas
 96 × 84 in. (243.8 × 213.4 cm)
 (31265)



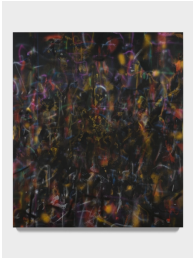
Julie Mehretu
 Inside Totality
(what the belly cannot hold), 2025-2026
 Ink and acrylic on canvas
 96 × 84 in. (243.8 × 213.4 cm)
 (31267)



Julie Mehretu
 Inside Totality
(what the hands cannot hold), 2025-2026
 Ink and acrylic on canvas
 96 × 84 in. (243.8 × 213.4 cm)
 (31269)

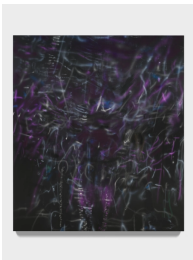


Julie Mehretu
 Inside Totality
(what the ground cannot hold), 2025
 Acrylic on canvas
 96 × 84 in. (243.8 × 213.4 cm)
 (31068)

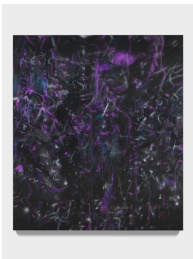


Julie Mehretu
 Inside Totality
(what the psyche cannot hold), 2025-2026
 Ink and acrylic on canvas
 96 × 84 in (243.8 × 213.4 cm)
 (31266)

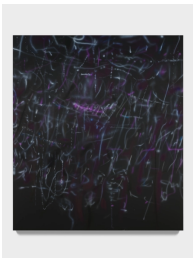
Third Floor
 North Gallery (clockwise from entrance)



Julie Mehretu
 Inside Totality
(what the heart cannot hold), 2025-2026
 Ink and acrylic on canvas
 96 × 84 in. (243.8 × 213.4 cm)
 (31264)



Julie Mehretu
 Inside Totality
(what the mind cannot hold), 2025-2026
 Ink and acrylic on canvas
 96 × 84 in. (243.8 × 213.4 cm)
 (31268)



Julie Mehretu
 Inside Totality
(what the mouth cannot hold), 2025-2026
 Ink and acrylic on canvas
 96 × 84 in (243.8 × 213.4 cm)
 (31270)



Julie Mehretu
 Inside Totality
(what the eyes cannot hold), 2025-2026
 Ink and acrylic on canvas
 96 × 84 in (243.8 × 213.4 cm)
 (31271)