

AN-MY LÊ

Dark Star/Grey Wolf

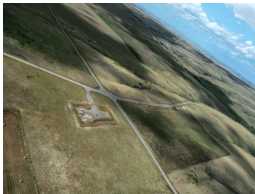
10 January – 22 February 2025
385 Broadway, New York, NY 10013



An-My Lê
Grey Wolf, 2024
Installation comprised of 7 vinyl prints
Image: 48 x 64 1/2 in. (121.9 x 163.8 cm) each
Edition of 3 plus 2 artist's proofs
(29444)



An-My Lê
Unidentified topographical feature, possibly located near Grass Land Colony in Cascade County, (47.341528, -111.302893), Montana, 2024, from Grey Wolf, 2024



An-My Lê
Launch Facility I-02 (aka 'India 02'), Cascade County. Located at the intersection of Boston Coulee Road and Eden Road, approximately one mile south of Eden. (47.257615, -111.277166) Montana, 2024, from Grey Wolf, 2024



An-My Lê
Crop Circle, near the Missouri River, Cascade County, (47.195984, -111.730484), Montana, 2024, from Grey Wolf, 2024



An-My Lê
Missile Alert Facility H-01 (aka 'Hotel 01'), Teton County, located approximately eight miles north of Fairfield and six miles east of Freezeout Lake, (47.696878, -111.942757), Montana, 2024, from Grey Wolf, 2024



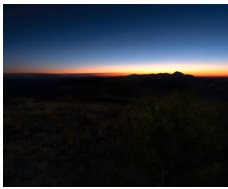
An-My Lê
Launch Facility J-08 (aka 'Juliette 08'), Cascade County, located west of Benton Lake National Wildlife Refuge, (47.697448, -111.429496), Montana, 2024, from Grey Wolf, 2024



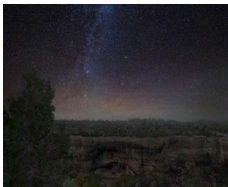
An-My Lê
Launch Facility I-04 (aka 'India 04'), Cascade County. Located on Adel Road approximately 18 miles directly south of Ulm, (47.148288, -111.563025) Montana, 2024, from Grey Wolf, 2024



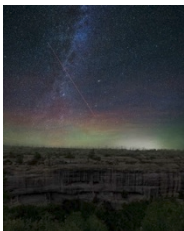
An-My Lê
Unidentified agricultural site, between Fairfield and Milford Colony, Montana, 2024, from Grey Wolf, 2024



An-My Lê
Park Point North Overlook II, Mesa Verde National Park, Colorado, 2024, from Dark Star, 2024
Inkjet Print
Image: 48 x 60 in. (121.9 x 152.4 cm)
Frame: 48 1/4 x 60 1/4 x 2 in. (122.6 x 153 x 5.1 cm)
Edition of 5 plus 2 artist's proofs
(29442)



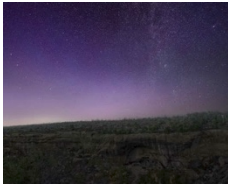
An-My Lê
Oak Tree House II, Mesa Verde National Park, Colorado, 2024, from Dark Star, 2024
Inkjet Print
Image: 48 x 60 in. (121.9 x 152.4 cm)
Frame: 48 1/4 x 60 1/4 x 2 in. (122.6 x 153 x 5.1 cm)
Edition of 5 plus 2 artist's proofs
(29438)



An-My Lê
Fire Temple and New Fire House, Mesa Verde National Park, Colorado, 2024, from Dark Star, 2024
Inkjet Print
Image: 60 x 48 in. (152.4 x 121.9 cm)
Frame: 60 1/4 x 48 1/4 x 2 in. (153 x 122.6 x 5.1 cm)
Edition of 5 plus 2 artist's proofs
(29437)



An-My Lê
Sun Point View, Mesa Verde National Park, Colorado, 2024, from Dark Star, 2024
 Inkjet Print
 Image: 48 x 60 in. (121.9 x 152.4 cm)
 Frame: 48 1/4 x 60 1/4 x 2 in. (122.6 x 153 x 5.1 cm)
 Edition of 5 plus 2 artist's proofs
 (29436)



An-My Lê
Oak Tree House I, Mesa Verde National Park, Colorado, 2024, from Dark Star, 2024
 Inkjet Print
 Image: 48 x 60 in. (121.9 x 152.4 cm)
 Frame: 48 1/4 x 60 1/4 x 2 in. (122.6 x 153 x 5.1 cm)
 Edition of 5 plus 2 artist's proofs
 (29439)

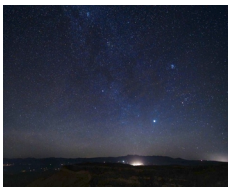
North Gallery Annex



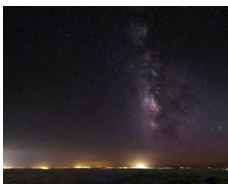
An-My Lê
Pinyon/Juniper Trees from 2002 Long Mesa Fire, Mesa Verde National Park, Colorado, 2024, from Dark Star, 2024
 Inkjet Print
 Image: 48 x 60 in. (121.9 x 152.4 cm)
 Frame: 48 1/4 x 60 1/4 x 2 in. (122.6 x 153 x 5.1 cm)
 Edition of 5 plus 2 artist's proofs
 (29435)



An-My Lê
Old Fire Lookout Station, Park Point, Mesa Verde National Park, Colorado, 2024, from Dark Star, 2024
 Inkjet Print
 Image: 48 x 60 in. (121.9 x 152.4 cm)
 Frame: 48 1/4 x 60 1/4 x 2 in. (122.6 x 153 x 5.1 cm)
 Edition of 5 plus 2 artist's proofs
 (29433)



An-My Lê
Park Point North Overlook I, Mesa Verde National Park, Colorado, 2024, from Dark Star 2024
 Inkjet Print
 Image: 48 x 60 in. (121.9 x 152.4 cm)
 Frame: 48 1/4 x 60 1/4 x 2 in. (122.6 x 153 x 5.1 cm)
 Edition of 5 plus 2 artist's proofs
 (29441)



An-My Lê
Park Point South Overlook, Mesa Verde National Park, Colorado, 2024, from Dark Star 2024
 Inkjet Print
 Image: 48 x 60 in. (121.9 x 152.4 cm)
 Frame: 48 1/4 x 60 1/4 x 2 in. (122.6 x 153 x 5.1 cm)
 Edition of 5 plus 2 artist's proofs
 (29434)

Viewing Room



An-My Lê
Launch Facility I-02 (aka 'India 02), located at the intersection of Boston Coulee Road and Eden Road, approximately one mile south of Eden, Cascade County, (47.257615, -111.277166), Montana, 2024, from Grey Wolf, 2024
 Inkjet Print
 Image: 48 x 64 1/2 in. (121.9 x 163.8 cm)
 Frame: 48 1/4 x 64 3/4 x 2 in. (122.6 x 164.5 x 5.1 cm)
 Edition of 5 plus 2 artist's proofs
 (29443)

Additional Works on View from *Silent General*, 2015 – ongoing



An-My Lê
Acting Secretaries of War Hallway, the Pentagon, Arlington, Virginia, from Silent General, 2019
 Pigment print
 40 x 56 1/2 in. (101.6 x 143.5 cm)
 Edition of 5 plus 2 artist's proofs
 (26128)