

WAR BABIES & THE STUDS

February 12 – March 26, 2022



RICHARD JACKSON
Accidents in Abstract Painting, 2021
Exhibition poster
30 x 30 in. (76.2 x 76.2 cm)
(25772)



JOE GOODE
L.A. artists and their cars (calendar)
12 individual sheets
22 1/2 x 15 in. (57.1 x 38.1 cm) (each)
(25770)



KEN PRICE AND CHARLES BUKOWSKI
Heat Wave, 1995
Portfolio of 15 screenprints
Sheet: 14 x 11 in. (35.6 x 27.9 cm) (each)
Box: 17 1/4 x 14 1/2 x 4 1/4 in. (43.8 x 36.8 x 10.8 cm)
Edition of 170
(25753)



KEN PRICE
Western Sunset, 1993
7 color screenprint
Sheet: 26 x 20 3/8 in. (66 x 51.8 cm)
Frame: 34 1/2 x 28 1/2 x 1 1/2 in. (87.6 x 72.4 x 3.8 cm)
Edition of 70
(25670)



LARRY BELL
Lux III, 1971
Silkscreen, mirror and canvas on board
36 x 36 x 2 in. (91.4 x 91.4 x 5.1 cm)
Edition of 150
(23356)



ED BEREAL
Untitled (Self Portrait), 1958-1965
Graphite on paper
Paper: 11 x 8 1/2 in. (27.9 x 21.6 cm)
Frame: 17 x 13 in. (43.2 x 33 cm)
(25760)



ED BEREAL
Untitled (Self Portrait) EB-C2, 1958-1965
Graphite on paper
Paper: 11 x 9 in. (27.9 x 22.9 cm)
Frame: 16 1/2 x 13 3/4 in. (41.9 x 34.9 cm)
(25761)



ED BEREAL
Untitled, 1966
Mixed media on board
12 1/2 x 8 1/2 in. (31.8 x 21.6 cm)
Frame: 21 1/4 x 17 1/4 in. (54 x 43.8 cm)
(25774)



VIJA CELMINS
Untitled (Web 3), 2002
1 color aquatint/drypoint
Edition of 65
(25807)



JOE GOODE
Untitled
Offset lithograph on Rives paper
29 1/8 x 21 3/8 in. (74 x 54.3 cm)
Edition of 25
(25775)



"War Babies" Group Show at Huysman Gallery,
1961
Exhibition poster
21 1/2 x 17 in. (54.6 x 43.2 cm)
(25769)

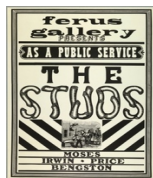


ED RUSCHA
News, Mews, Pews, Brews, Stews, Dues, 1970
Portfolio of 6 organic screenprints
Sheet: 23 x 31 in. (58.4 x 78.7 cm) (each)
Box: 33 1/2 x 25 1/2 x 1 1/2 in. (85.1 x 64.8 x 3.8 cm)
Edition of 125
(25754)

LIBRAIRIE MARIAN GOODMAN



ED RUSCHA
Plate, 1974
Lithograph on Arches Cover paper
Plate: 8 1/2 x 19 in. (21.6 x 48.3 cm)
Sheet: 18 1/8 x 26 1/8 in. (46 x 66.4 cm)
Edition of 24
(0501)



The Studs" Group Show at Ferus Gallery, 1964
Exhibition poster
Frame: 44 x 30 x 1 in. (111.8 x 76.2 x 2.5 cm)
(25768)



JOE GOODE
Untitled from the "Tissue Tear Series", 1975
4 color lithograph
19 3/4 x 25 3/4 in. (50.2 x 65.4 cm)
Edition of 26
(25752)



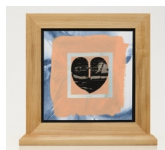
BILLY AL BENGSTON
Sweets, 2004
Mixed media
6 x 6 in. (15.2 x 15.2 cm)
Edition of 20
(25719)



BILLY AL BENGSTON
Sweets, 2004
Mixed media
6 x 6 in. (15.2 x 15.2 cm)
Edition of 20 (each is unique)
(25719)



BILLY AL BENGSTON
Sweets, 2004
Mixed media
6 x 6 in. (15.2 x 15.2 cm)
Edition of 20 (each is unique)
(25719)



BILLY AL BENGSTON
Sweets, 2004
Mixed media
6 x 6 in. (15.2 x 15.2 cm)
Edition of 20 (each is unique)
(25719)



BILLY AL BENGSTON
Sweets, 2004
Mixed media
6 x 6 in. (15.2 x 15.2 cm)
Edition of 20 (each is unique)
(25719)



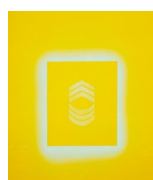
BILLY AL BENGSTON
Sweets, 2004
Mixed media
6 x 6 in. (15.2 x 15.2 cm)
Edition of 20 (each is unique)
(25719)



BILLY AL BENGSTON
Sweets, 2004
Mixed media
6 x 6 in. (15.2 x 15.2 cm)
Edition of 20
(25719)



BILLY AL BENGSTON
Sweets, 2004
Mixed media
6 x 6 in. (15.2 x 15.2 cm)
Edition of 20 (each is unique)
(25719)



BILLY AL BENGSTON
The Alamo, 1969
1 form a series of 5; yellow lacquer on aluminum
36 x 34 in. (91.4 x 86.4 cm)
Edition of 20
(25740)

MGG JV CO LLC

66 RUE DU TEMPLE 75003 PARIS

+33 (0) 1 42 77 57 44 MARIANGOODMAN.COM

LIBRAIRIE MARIAN GOODMAN



Edward Kienholz
For \$466, 1990
Watercolor on paper
11 3/4 x 15 3/4 in. (30 x 40 cm)
(25850)



Ed Moses
Untitled (Ikuru Speak-No), 1990
Collage on Japanese paper
36 x 25 in. (91.4 x 63.5 cm)
Edition of 250
(25758)



ED RUSCHA
Crucifix I, 1991
Graphite and gold paint on paper
4 x 3 in. (10.2 x 7.6 cm)
(25757)



Edward Kienholz
For \$465, 1990
Watercolor on paper
11 3/4 x 15 3/4 in. (30 x 40 cm)
(25849)



ED BEREAL
Untitled (Self Portrait) EB-G1, 1958-1965
Graphite on paper
Paper: 11 x 9 in. (27.9 x 22.9 cm)
(25762)



RON MIYASHIRO
Untitled #26, 1962
Oil on board
15 3/4 x 20 in. (31.1 x 21.3 cm)
(SC/25660)



RON MIYASHIRO
Untitled #26, 1962
Oil on board
12 1/4 x 8 3/8 in. (31.1 x 21.3 cm)
(SC/25660)

MGG JV CO LLC

66 RUE DU TEMPLE 75003 PARIS

+33 (0) 1 42 77 57 44 MARIANGOODMAN.COM