

PAUL SIETSEMA

12 February – 26 March 2022

GROUND FLOOR (right to left)



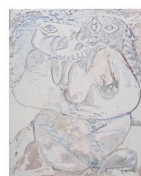
*Woman Sitting, 2022*  
Acrylic on linen  
59 7/8 x 42 1/8 in. (152 x 107 cm)  
No. 25836



*Black Picasso, 2022*  
Acrylic on linen  
74 1/8 x 57 7/8 in. (188 x 147 cm)  
No. 25834



*Carriage Painting (Green Square), 2022*  
Enamel on oil on linen  
76 3/4 x 68 7/8 in. (195 x 175 cm)  
No. 25831



*The Embrace, 2022*  
Acrylic on linen  
74 3/8 x 57 7/8 in. (189 x 147 cm)  
No. 25835



*Black Phone Painting, 2022*  
Enamel on linen in artist's frame  
29 1/2 x 29 1/8 in. (75 x 74 cm)  
No. 25833



*Carriage Painting, 2022*  
Enamel on oil on linen  
39 3/4 x 28 in. (101 x 71 cm)  
No. 25832

LOWER GALLERY



*Last Painting, 2021*  
Acrylic on canvas  
36 x 45 in. (91.4 x 114.3 cm)  
No. 25526



*Abstract Composition, 2014*  
16mm film, color, sound; approx. 15 min.  
looped  
Edition of 5 plus 2 artist's proofs  
No. 25839



*Vertical Newspaper (Modern British & Irish Art), 2021*  
Ink and enamel on paper in artist's frame  
Paper: 55 1/8 x 29 in. (140 x 73.5 cm)  
Frame: 57 7/8 x 31 7/8 in. (147 x 81 cm)  
No. 25837



*Vertical coin game, 2021*  
Enamel on linen  
32 5/8 x 28 3/8 in. (83 x 72 cm)  
No. 25527

CRYPT



*At the hour of tea, 2013*  
16mm film, color, no sound; approx. 17 min. looped  
Edition of 7  
No. 25838