

MARIAN GOODMAN GALLERY

Tacita Dean

The Dante Project · One Hundred and Fifty Years of Painting · Pan Amicus · Significant Form · Monet Hates Me

Marian Goodman Gallery, New York

September 7 – October 23, 2021

North Gallery



Inferno, 2021

8 photogravures with screenprint on Somerset

Paper: 33 1/2 x 46 1/4 in. (85.1 x 117.5 cm) (each)

Frame: 34 1/4 x 36 7/8 x 1 5/8 in. (87 x 119.1 x 4.1 cm) (each)

Overall: 35 1/4 x 375 5/8 in. (89.53 x 954 cm)

Edition of 18 + 4 APs

(25277)



Purgatory (1st Cornice), 2021

Colored pencil on Fuji Velvet paper mounted on paper

149 5/8 x 136 1/8 in. (380 x 345.5 cm)

(24353)



Purgatory (2nd Cornice), 2021

Colored pencil on Fuji Velvet paper mounted on paper

141 3/4 x 188 1/2 in. (360 x 478.8 cm)

(24354)



Purgatory (5th Cornice), 2021

Colored pencil on Fuji Velvet paper mounted on paper

139 3/4 x 176 7/8 in. (355 x 449.4 cm)

(25032)



Purgatory (4th Cornice), 2021

Colored pencil on Fuji Velvet paper mounted on paper

137 3/4 x 176 3/8 in. (350 x 448 cm)

(24356)

NEW YORK PARIS LONDON

WWW.MARIANGOODMAN.COM

MARIAN GOODMAN GALLERY



Paradise: Archangels, 2021

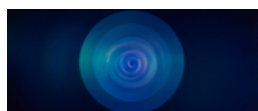
19 color screenprint with a satin seal varnish on Somerset Satin Tub 410g.

Print: 24 1/4 x 57 1/8 in. (61.5 x 145 cm) (each)

Frame: 26 1/2 x 59 1/2 x 2 in. (67.3 x 151.1 x 5.1 cm) (each)

Edition of 24 plus 8 APs

(25272)



Paradise: Dominations, 2021

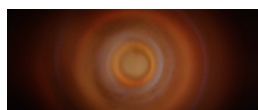
17 color screenprint with a satin seal varnish on Somerset Satin Tub 410g.

Print: 24 1/4 x 57 1/8 in. (61.5 x 145 cm) (each)

Frame: 26 1/2 x 59 1/2 x 2 in. (67.3 x 151.1 x 5.1 cm) (each)

Edition of 24 plus 8 APs

(25272)



Paradise: Principalities, 2021

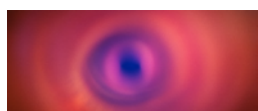
19 color screenprint with a satin seal varnish on Somerset Satin Tub 410g.

Print: 24 1/4 x 57 1/8 in. (61.5 x 145 cm) (each)

Frame: 26 1/2 x 59 1/2 x 2 in. (67.3 x 151.1 x 5.1 cm) (each)

Edition of 24 plus 8 APs

(25272)



Paradise: Thrones, 2021

18 color screenprint with a satin seal varnish on Somerset Satin Tub 410g.

Print: 24 1/4 x 57 1/8 in. (61.5 x 145 cm) (each)

Frame: 26 1/2 x 59 1/2 x 2 in. (67.3 x 151.1 x 5.1 cm) (each)

Edition of 24 plus 8 APs

(25272)



Paradise: Powers, 2021

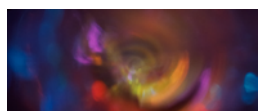
17 color screenprint with a satin seal varnish on Somerset Satin Tub 410g.

Print: 24 1/4 x 57 1/8 in. (61.5 x 145 cm) (each)

Frame: 26 1/2 x 59 1/2 x 2 in. (67.3 x 151.1 x 5.1 cm) (each)

Edition of 24 plus 8 APs

(25272)



Paradise: Cherubim, 2021

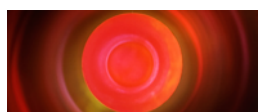
22 color screenprint on with a satin seal varnish on Somerset Satin Tub 410g.

Print: 24 1/4 x 57 1/8 in. (61.5 x 145 cm) (each)

Frame: 26 1/2 x 59 1/2 x 2 in. (67.3 x 151.1 x 5.1 cm) (each)

Edition of 24 plus 8 APs

(25272)



Paradise: Virtues, 2021

20 color screenprint with a satin seal varnish on Somerset Satin Tub 410g.

Print: 24 1/4 x 57 1/8 in. (61.5 x 145 cm) (each)

Frame: 26 1/2 x 59 1/2 x 2 in. (67.3 x 151.1 x 5.1 cm) (each)

Edition of 24 plus 8 APs

(25272)

NEW YORK PARIS LONDON

WWW.MARIANGOODMAN.COM

MARIAN GOODMAN GALLERY



Paradise: Seraphim, 2021

18 color screenprint with a satin seal varnish on Somerset Satin Tub 410g.

Print: 24 1/4 x 57 1/8 in. (61.5 x 145 cm) (each)

Frame: 26 1/2 x 59 1/2 x 2 in. (67.3 x 151.1 x 5.1 cm) (each)

Edition of 24 plus 8 APs

(25272)



Paradise: Angels, 2021

17 color screenprint with a satin seal varnish on Somerset Satin Tub 410g.

Print: 24 1/4 x 57 1/8 in. (61.5 x 145 cm) (each)

Frame: 26 1/2 x 59 1/2 x 2 in. (67.3 x 151.1 x 5.1 cm) (each)

Edition of 24 plus 8 APs

(25272)



Paradise: Empyrean, 2021

18 color screenprint with a satin seal varnish on Somerset Satin Tub 410g.

Print: 24 1/4 x 57 1/8 in. (61.5 x 145 cm) (each)

Frame: 26 1/2 x 59 1/2 x 2 in. (67.3 x 151.1 x 5.1 cm) (each)

Edition of 24 plus 8 APs

(25272)



Purgatory (3rd Cornice), 2021

Colored pencil on Fuji Velvet paper mounted on paper

140 1/8 x 177 in. (355.91 x 449.58 cm)

(24355)

South Gallery



The great god Pan is dead, 2021

Collage on vintage index card

Paper: 4 x 6 in. (10.2 x 15.2 cm)

Frame: 12 3/4 x 12 3/4 x 1 5/5 in. (30.5 x 32.4 x 4.1 cm)

(25291)



Pan (Wind), 2021

Collage on vintage index card

Paper: 4 x 6 in. (10.2 x 15.2 cm)

Frame: 12 3/4 x 12 3/4 x 1 5/5 in. (30.5 x 32.4 x 4.1 cm)

(25290)

NEW YORK PARIS LONDON

WWW.MARIANGOODMAN.COM

MARIAN GOODMAN GALLERY



Pan (Rhubarb), 2021
Collage on vintage index card
Paper: 4 x 6 in. (10.2 x 15.2 cm)
Frame: 12 3/4 x 12 3/4 x 1 5/5 in. (30.5 x 32.4 x 4.1 cm)
(25293)



Pan (Not in evidence), 2021
Collage on vintage index card
Paper: 4 x 6 in. (10.2 x 15.2 cm)
Frame: 12 3/4 x 12 3/4 x 1 5/5 in. (30.5 x 32.4 x 4.1 cm)
(25292)



Panselinos, 2021
Collage on vintage index card
Paper: 4 x 6 in. (10.2 x 15.2 cm)
Frame: 12 3/4 x 12 3/4 x 1 5/5 in. (30.5 x 32.4 x 4.1 cm)
(25294)



Pan (July), 2021
Collage on vintage index card
Paper: 4 x 6 in. (10.2 x 15.2 cm)
Frame: 12 3/4 x 12 3/4 x 1 5/5 in. (30.5 x 32.4 x 4.1 cm)
(25295)



Panselinos, 2021
Spray chalk, gouache, and charcoal pencil on slate
Slate: 16 3/4 x 21 in. (42.5 x 53.3 cm)
Frame: 19 1/4 x 23 5/8 x 3 in. (48.9 x 60 x 7.6 cm)
(25109)



One Hundred and Fifty Years of Painting, 2021
16mm color film, optical sound, 50 1/2 minutes,
continuous loop
Edition of 4 plus 1 artist's proof
(23592)

NEW YORK PARIS LONDON

WWW.MARIANGOODMAN.COM

MARIAN GOODMAN GALLERY

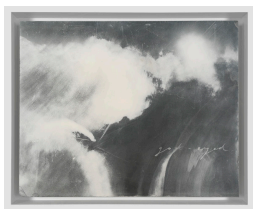


The great god Pan is dead, 2021

Spray chalk, gouache, and charcoal pencil on slate

Slate: 18 x 22 1/4 in. (45.7 x 56.5 cm)

Frame: 20 5/8 x 24 3/4 x 3 in. (52.4 x 62.9 x 7.6 cm)
(25112)



God-eyed, 2021

Spray chalk, gouache, and charcoal pencil on slate

Slate: 15 7/8 x 19 3/4 in. (40.3 x 50 cm)

Frame: 18 3/8 x 22 1/4 x 3 in. (46.7 x 56.5 x 7.6 cm)
(25114)



Friend and helper, 2021

Spray chalk, gouache, and charcoal pencil on slate

Slate: 18 1/8 x 22 1/2 in. (46 x 57.2 cm)

Frame: 20 1/8 x 25 x 3 in. (51.1 x 63.5 x 7.6 cm)
(25111)

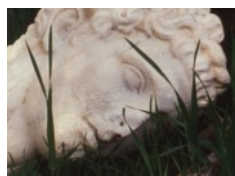


O goat-foot, 2021

Spray chalk, gouache, and charcoal pencil on slate

Slate: 16 1/2 x 16 1/2 in. (41.9 x 41.9 cm)

Frame: 18 7/8 x 18 7/8 x 3 in. (47.9 x 47.9 x 7.6 cm)
(25116)



Pan Amicus, 2021

16mm color film, optical sound, 31 minutes,
continuous loop

Edition of 4 plus 1 artist's proof
(22368)

Third Floor



Significant Form, 2021

130 photographs mounted on paper: 73 hand-printed black and white fibre-based photographs and 57 hand-printed color photographs

Dimensions variable

Edition of 2 plus 1 artist's proof
(25038)

NEW YORK PARIS LONDON

WWW.MARIANGOODMAN.COM

M A R I A N G O O D M A N G A L L E R Y



Monet Hates Me, 2021

An exhibition in a box

Special edition of 100 clothbound and foil embossed boxes, each containing 50 objects, three of which are unique, one signed and numbered

Box: 25 3/4 x 19 5/8 x 3 1/2 in. (65.3 x 49.8 x 8.8 cm)

Edition of 100

Designed and produced by Tacita Dean, in collaboration with Martyn

Ridgewell. Published by the Getty Research Institute, Los Angeles, in

association with Verlag der Buchhandlung Walther und Franz König, Cologne
(24682)

N E W Y O R K P A R I S L O N D O N

WWW.MARIANGOODMAN.COM