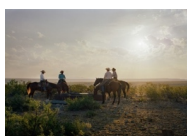


MARIAN GOODMAN GALLERY

An-My Lê
Silent General
 January 24 – February 29, 2020

Lower South Gallery



Fragment II: Cattle Drive at Perdiz Creek Ranch (Reservoir), Marfa, Texas from Silent General, 2019
 Pigment print
 56 1/2 x 40 in. (143.5 x 101.6 cm)
 Edition of 5 plus 2 artist's proofs (23320)



Fragment II: Cemetery, Ojinaga, Mexico, from Silent General, 2019
 Pigment print
 56 1/2 x 40 in. (143.5 x 101.6 cm)
 Edition of 5 plus 2 artist's proofs (23327)



Fragment II: Restoration of J.M.W. Turner's Port Ruysdael, Yale Center for British Art, New Haven, Connecticut, from Silent General, 2018
 Pigment print
 56 1/2 x 40 in. (143.5 x 101.6 cm)
 Edition of 5 plus 2 artist's proofs (23495)



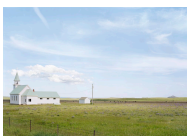
Fragment II: Migrant Workers Harvesting Asparagus, Mendota, California, from Silent General, 2019
 Pigment print
 56 1/2 x 40 in. (143.5 x 101.6 cm)
 Edition of 5 plus 2 artist's proofs (23317)



Fragment II: High School Students, Fourth of July Celebration, New Orleans, Louisiana, from Silent General, 2017
 Pigment print
 40 x 56 1/2 in. (101.6 x 143.5 cm)
 Edition of 5 plus 2 artist's proofs (23311)



Fragment II: Drainage Pump Station, New Orleans, Louisiana, from Silent General, 2016
 Pigment print
 56 1/2 x 40 in. (143.5 x 101.6 cm)
 Edition of 5 plus 2 artist's proofs (23494)



Fragment II: Lutheran Church Melville, Montana, from Silent General, 2019
 Pigment print
 56 1/2 x 40 in. (143.5 x 101.6 cm)
 Edition of 5 plus 2 artist's proofs (23493)



Fragment VIII: Mexico Customs and Border Protection Officer, Presidio-Ojinaga International Bridge, Ojinaga, Mexico, from Silent General, 2019
 Pigment print
 56 1/2 x 40 in. (143.5 x 101.6 cm)
 Edition of 5 plus 2 artist's proofs (23324)



Fragment VIII: US Customs and Border Protection Officer, Presidio-Ojinaga International Bridge, Presidio, Texas, from Silent General, 2019
 Pigment print
 40 x 56 1/2 in. (101.6 x 143.5 cm)
 Edition of 5 plus 2 artist's proofs (23322)



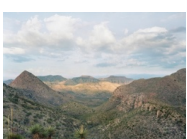
Fragment VIII: Farmland, Rio Grande, US- Mexico Border, from Silent General, 2019
 Pigment print
 56 1/2 x 40 in. (143.5 x 101.6 cm)
 Edition of 5 plus 2 artist's proofs (23481)



Fragment VIII: Cars along the Rio Grande, US-Mexico Border, Ojinaga, Mexico, from Silent General, 2019
 Pigment print
 56 1/2 x 40 in. (143.5 x 101.6 cm)
 Edition of 5 plus 2 artist's proofs (23321)



Fragment VIII: Rio Grande, US-Mexico Border, from Silent General, 2019
 Pigment print
 56 1/2 x 40 in. (143.5 x 101.6 cm)
 Edition of 5 plus 2 artist's proofs (23479)



Fragment VIII: Pinto Canyon (II), Chinati Mountains, Texas, from Silent General, 2019
 Pigment print
 56 1/2 x 40 in. (143.5 x 101.6 cm)
 Edition of 5 plus 2 artist's proofs (23480)

Lower North Gallery



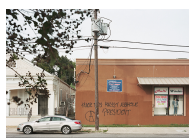
Fragment I: General P.G.T. Beauregard, Monument, New Orleans, Louisiana, from Silent General, 2016
 Inkjet print
 39 1/2 x 56 in. (100.3 x 142.2 cm)
 Edition of 5 plus 2 artist's proofs (19898)



Fragment I: Battle of Corinth, Film Set (Free State of Jones), Bush, Louisiana, from Silent General, 2015
 Inkjet print
 39 1/2 x 56 in. (100.3 x 142.2 cm)
 Edition of 5 plus 2 artist's proofs (19897)



Fragment I: Battle of Corinth, Film Set (Free State of Jones), Bush, Louisiana, from Silent General, 2015
 Inkjet print
 39 1/2 x 56 in. (100.3 x 142.2 cm)
 Edition of 5 plus 2 artist's proofs (19897)



Fragment I: Graffiti, November 9, New Orleans, Louisiana, from Silent General, 2016
 Inkjet print
 39 1/2 x 56 in. (100.3 x 142.2 cm)
 Edition of 5 (19899)

MARIAN GOODMAN GALLERY



Fragment I: Sunday Mass, November 6, New Orleans, Louisiana, from Silent General, 2016
Inkjet print
39 1/2 x 56 in. (100.3 x 142.2 cm)
Edition of 5 plus 2 artist's proofs (19902)



Fragment I: Day Workers, November 10, Venice, Louisiana, from Silent General, 2016
Inkjet print
39 1/2 x 56 in. (100.3 x 142.2 cm)
Edition of 5 plus 2 artist's proofs (19900)



Fragment I: Swamp, April 17, Venice, Louisiana, from Silent General, 2016
Inkjet print
39 1/2 x 56 in. (100.3 x 142.2 cm)
Edition of 5 plus 2 artist's proofs (19903)

North Side Gallery



Fragment VII: Firing Lesson, Film Set, (Free State of Jones), Chicot State Park, Louisiana, from Silent General, 2015
Pigment print
56 1/2 x 40 in. (143.5 x 101.6 cm)
Edition of 5 plus 2 artist's proofs (23496)



Fragment VII: Swamp, Film set (Free State of Jones), Chicot State Park, Louisiana, from Silent General, 2015
Pigment print
56 1/2 x 40 in. (143.5 x 101.6 cm)
Edition of 5 plus 2 artist's proofs (23497)



Fragment VII: Radio Antennas, The Very Large Array, Socorro, New Mexico, from Silent General, 2018
Pigment print
40 x 56 1/2 in. (101.6 x 143.5 cm)
Edition of 5 plus 2 artist's proofs (23312)



Fragment VII: Land Scars from the Trans-Pecos Pipeline, Marfa, Texas, from Silent General, 2019
Pigment print
56 1/2 x 40 in. (143.5 x 101.6 cm)
Edition of 5 plus 2 artist's proofs (23486)



Fragment VII: High School Students Protesting Gun Violence, Washington Square Park, New York, from Silent General, 2018
Pigment print
40 x 56 1/2 in. (101.6 x 143.5 cm)
Edition of 5 plus 2 artist's proofs (21915)

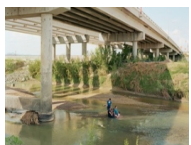


Fragment VII: Trump Presidency, Oval Office, Saturday Night Live Set, NBC Studios, New York City, from Silent General, 2018
Pigment print
40 x 56 1/2 in. (101.6 x 143.5 cm)
Edition of 5 plus 2 artist's proofs (21926)



Fragment VII: "Max Rose for Congress", Canvassing Volunteer, Staten Island, from Silent General, 2018
Pigment print
56 1/2 x 40 in. (143.5 x 101.6 cm)
Edition of 5 plus 2 artist's proofs (23498)

Terrace Gallery



Fragment IV: Family under the, Presidio-Ojinaga-International Bridge, Texas/Mexico Border, from Silent General, 2019
Pigment print
56 1/2 x 40 in. (143.5 x 101.6 cm)
Edition of 5 plus 2 artist's proofs (23323)



Fragment IV: General Robert E. Lee Monument, New Orleans, Louisiana, from Silent General, 2016
Pigment print
56 1/2 x 40 in. (143.5 x 101.6 cm)
Edition of 5 plus 2 artist's proofs (23483)



Fragment IV: The Monumental Task Committee press conference and demonstration by descendants of General P.G.T. Beauregard, New Orleans, Louisiana, from Silent General, 2017
Pigment print
40 x 56 1/2 in. (101.6 x 143.5 cm)
Edition of 5 plus 2 artist's proofs (23309)



Fragment IV: Citrus Trees with Cross- Pollination Shield, Fresno, California, from Silent General, 2019
Pigment print
56 1/2 x 40 in. (143.5 x 101.6 cm)
Edition of 5 plus 2 artist's proofs (23482)



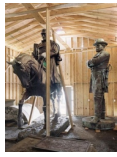
Fragment IV: Citrus Tree, Fowler, California, from Silent General, 2019
Pigment print
56 1/2 x 40 in. (143.5 x 101.6 cm)
Edition of 5 plus 2 artist's proofs (23316)



Fragment IV: Farmhouse, Centerville, California, from Silent General, 2019
Pigment print
56 1/2 x 40 in. (143.5 x 101.6 cm)
Edition of 5 plus 2 artist's proofs (23484)

Lower Corridor

MARIAN GOODMAN GALLERY



Fragment VI: General Robert E. Lee and P.G.T. Beauregard Monuments, Homeland Security Storage, New Orleans, Louisiana, from Silent General, 2017
Pigment print
56 1/2 x 40 in. (143.5 x 101.6 cm)
Edition of 6 plus 2 artist's proofs
(21911)

Upper Gallery



Combat Operations Center Guard, from 29 Palms, 2003-2004
Silver gelatin print
37 1/2 x 26 in. (95.3 x 66 cm)
Edition of 5 plus 2 artist's proofs
(19911)



Combat Support Services Operations, from 29 Palms, 2003-2004
Silver gelatin print
26 1/2 x 38 in. (67.3 x 96.5 cm)
Edition of 5 plus 2 artist's proofs
(19918)



Infantry Officers' Brief, from 29 Palms, 2003-2004
Silver gelatin print
37 1/2 x 26 in. (95.3 x 66 cm)
Edition of 5 plus 2 artist's proofs
(19912)



Mechanized Assault, from 29 Palms, 2003-2004
Silver gelatin print
37 1/2 x 26 in. (95.3 x 66 cm)
Edition of 5 plus 2 artist's proofs
(19914)



Infantry Platoon, Attack, from 29 Palms, 2003-2004
Silver gelatin print
26 1/2 x 38 in. (67.3 x 96.5 cm)
Edition of 5 plus 2 artist's proofs
(23050)



Resupply Operations, from 29 Palms, 2003-2004
Silver gelatin print
26 1/2 x 38 in. (67.3 x 96.5 cm)
Edition of 5 plus 2 artist's proofs
(23053)



Marine Palms, from 29 Palms, 2003-2004
Silver gelatin print
26 1/2 x 38 in. (67.3 x 96.5 cm)
Edition of 5 plus 2 artist's proofs
(23044)



Bivouac, from 29 Palms, 2003-2004
Silver gelatin print
26 1/2 x 38 in. (67.3 x 96.5 cm)
Edition of 5 plus 2 artist's proofs
(23048)



Security and Stabilization Operations, Graffiti II, from 29 Palms, 2003-2004
Silver gelatin print
37 1/2 x 26 in. (95.3 x 66 cm)
Edition of 5 plus 2 artist's proofs
(19917)



Explosive Ordinance Disposal, from 29 Palms, 2003-2004
Silver gelatin print
26 1/2 x 38 in. (67.3 x 96.5 cm)
Edition of 5 plus 2 artist's proofs
(23049)



Night Operations IV, from 29 Palms, 2003-2004
Silver gelatin print
37 1/2 x 26 in. (95.3 x 66 cm)
Edition of 5 plus 2 artist's proofs
(19919)

Video



Brief, from 29 Palms, 2005
Single channel video, black and white, silent; 7 min.
30 sec.
Edition of 3 plus 2 artist's proofs
(23678)