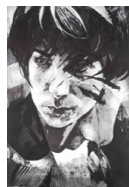


MARIAN GOODMAN GALLERY

Matt Saunders
Poems of Our Climate
11 January – 17 February 2018

Lower Main Gallery

(Left from stairs)



Ratlos / Indomitable 5, 2017
Copper plate etching; soft ground etching, soap ground aquatint, spit bite aquatint, sugar lift aquatint open bite
64 x 44 in. (162.6 x 111.8 cm)
Frame: 70 x 50 x 3 in. (177.8 x 127 x 7.6 cm)
Edition of 16 + 3AP
(20488)



Ratlos / Indomitable 4, 2017
Copper plate etching; soft ground etching, soap ground aquatint, spit bite aquatint, sugar lift aquatint open bite
64 x 44 in. (162.6 x 111.8 cm)
Frame: 70 x 50 x 3 in. (177.8 x 127 x 7.6 cm)
Edition of 16 + 3AP
(20487)



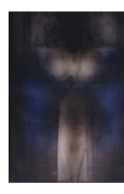
Ratlos / Indomitable 3, 2017
Copper plate etching; soft ground etching, soap ground aquatint, spit bite aquatint, sugar lift aquatint open bite
64 x 44 in. (162.6 x 111.8 cm)
Frame: 70 x 50 x 3 in. (177.8 x 127 x 7.6 cm)
Edition of 16 + 3AP
(20486)



Ratlos / Indomitable 2, 2017
Copper plate etching; soft ground etching, soap ground aquatint, spit bite aquatint, sugar lift aquatint open bite
64 x 44 in. (162.6 x 111.8 cm)
Frame: 70 x 50 x 3 in. (177.8 x 127 x 7.6 cm)
Edition of 16 + 3AP
(20485)



Ratlos / Indomitable 1, 2017
Copper plate etching; soft ground etching, soap ground aquatint, spit bite aquatint, sugar lift aquatint open bite
64 x 44 in. (162.6 x 111.8 cm)
Frame: 70 x 50 x 3 in. (177.8 x 127 x 7.6 cm)
Edition of 16 + 3AP
(20484)



Jane Double Profile, 2017
C print on Kodak Endura Premiere matte paper
49 1/4 x 39 3/8 in. (125 x 100 cm)
(20674)



Jane #1, 2017
C print on Kodak Endura Premiere matte paper
63 x 45 5/8 in. (160 x 116 cm)
(20668)



Jane #2, 2017
C print on Kodak Endura Premiere matte paper
63 x 45 5/8 in. (160 x 116 cm)
(20669)



Portrait, 2018
Oil on chiffon
43 1/4 x 59 1/8 in. (110 x 150 cm)
(20662)



Portrait, 2018
Oil on chiffon
51 1/8 x 63 in. (130 x 160 cm)
(20661)



Portrait, 2018
Oil on chiffon
51 1/8 x 63 in. (130 x 160 cm)
(20660)



Back (Ratlos / Indomitable) 5, 2017
Copper plate etching
64 x 44 in. (162.6 x 111.8 cm)
Frame: 70 x 50 x 3 in. (177.8 x 127 x 7.6 cm)
Edition of 5 + 1 AP
(20493)



Back (Ratlos / Indomitable) 4, 2017
Copper plate etching
64 x 44 in. (162.6 x 111.8 cm)
Frame: 70 x 50 x 3 in. (177.8 x 127 x 7.6 cm)
Edition of 5 + 1AP
(20492)



Back (Ratlos / Indomitable) 3, 2017
Copper plate etching
64 x 44 in. (162.6 x 111.8 cm)
Frame: 70 x 50 x 3 in. (177.8 x 127 x 7.6 cm)
Edition of 5 + 1AP
(20491)



Back (Ratlos / Indomitable) 2, 2017
Copper plate etching
64 x 44 in. (162.6 x 111.8 cm)
Frame: 70 x 50 x 3 in. (177.8 x 127 x 7.6 cm)
Edition of 5 + 1AP
(20490)



Back (Ratlos / Indomitable) 1, 2017
Copper plate etching
64 x 44 in. (162.6 x 111.8 cm)
Frame: 70 x 50 x 3 in. (177.8 x 127 x 7.6 cm)
Edition of 5 + 1AP
(20489)

MARIAN GOODMAN GALLERY



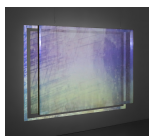
Zen Trees, 2017
C print on Kodak Endura Premiere matte paper
63 x 45 5/8 in. (160 x 116 cm)
(20670)



Jane Profile, 2017
C print on Kodak Endura Premiere matte paper
44 1/8 x 44 1/8 in. (112 x 112 cm)
(20675)



Landscape, 2017
C print on Kodak Endura Premiere glossy paper
39 3/8 x 49 1/4 in. (100 x 125 cm)
(20673)



Painted Skin (Single), 2017-2018
Single channel projection; 12 min 21 secs
Edition of 2 + 1AP
(20732)



Portrait, 2018
Oil on chiffon
55 1/8 x 70 7/8 in. (140 x 180 cm)
(20659)

Corridor



Jane (Johnny) #4, 2017
C print on Kodak Endura Premiere matte paper
59 1/8 x 45 5/8 in. (150 x 116 cm)
(20671)

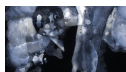


Leni, 2017
C print on Kodak Endura Premiere matte paper
59 1/8 x 45 5/8 in. (150 x 116 cm)
(20672)



London #5, 2017
C print on Kodak Endura Premiere glossy paper
61 1/8 x 43 3/4 in. (155 x 111 cm)
(20715)

Upper Main Gallery



Townhouse (The Intricate Alps), 2017-2018
5 channel video installation on custom screens
2 screens: 107 3/4 x 60 5/8 in. (273.8 x 154 cm)
1 screen: 80 7/8 x 60 5/8 in. (205.3 x 154 cm)
2 screens: 60 5/8 x 45 1/2 in. (154 x 115.5 cm)
Edition of 1 + 1AP
(20702)



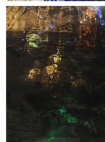
London #1, 2017
C print on Kodak Endura Premiere matte paper
63 x 45 5/8 in. (160 x 116 cm)
(20663)



London #4, 2017
C print on Kodak Endura Premiere matte paper
63 x 45 5/8 in. (160 x 116 cm)
(20666)



London #3, 2017
C print on Kodak Endura Premiere matte paper
63 x 45 5/8 in. (160 x 116 cm)
(20665)



London #2, 2017
C print on Kodak Endura Premiere matte paper
63 x 45 5/8 in. (160 x 116 cm)
(20664)



Bath, 2017
C print on Kodak Endura Premiere matte paper
45 5/8 x 63 in. (116 x 160 cm)
(20667)