

MARIAN GOODMAN GALLERY

Allan Sekula: *Labor's Persistence*
Marian Goodman Gallery, New York
JUNE 25 – AUGUST 23, 2019

North Gallery:



This Ain't China: A Photonovel, 1974

29 silver gelatin prints, 10 color photographs,
5 booklets in English, 5 booklets in Chinese, 2 chairs
5 frames: 22 7/8 x 29 x 1 1/2 in. (58 x 73.5 x 3.81 cm);
3 frames: 31 3/8 x 27 1/2 x 1 1/2 in. (79.7 x 70 x 3.81 cm);
1 frame: 44 1/4 x 52 x 1 1/2 in. (112.5 x 132 x 3.81 cm)
Booklets: 9 x 6 1/4 x 1/4 in. (22.9 x 15.9 x 0.6 cm) (each)
(22096)



Dear Bill Gates, 1999

Triptych; cibachrome print, typewritten letter
Frame: 26 3/4 x 101 3/4 x 2 1/2 in. (67.9 x 258.4 x 6.3 cm)
Letter (framed): 14 3/4 x 12 1/4 x 1 3/4 in. (37.5 x 31.1 x 4.4 cm)
Edition of 5 plus 2 artist's proofs
(22105)



Untitled Slide Sequence, 1972/2011

25 archival pigment prints
Photo: 13 3/4 x 20 in. (34.9 x 50.8 cm) (each)
Frame: 14 1/8 x 20 3/8 x 1 5/8 in. (35.9 x 51.9 x 4 cm) (each)
Edition of 5 plus 2 artist's proofs
(SC/22671)



Dockers unloading shipload of frozen fish from Argentina from "Fish Story", 1989-1995

Cibachrome print
Frame: 17 7/8 x 25 x 1 1/4 in. (45.4 x 63.5 x 3.2 cm)
(22675)



Portrait of John Stanson, Museum Guard and Former Docker from "Freeway to China", 1998-1999

Cibachrome print
Frame: 16 3/4 x 20 5/8 x 2 1/2 in. (42.5 x 52.4 x 6.3 cm)
Edition of 2
(22681)

NEW YORK PARIS LONDON

WWW.MARIANGOODMAN.COM

MARIAN GOODMAN GALLERY



Assemblage made by coal dockworkers, Vancouver from "TITANIC's wake", 1998/2000

Cibachrome print

Frame: 29 1/2 x 40 1/2 x 2 1/2 in. (74.9 x 102.9 x 6.3 cm)

Edition of 2
(22680)



Bo'sun driving the forward winch ... from "Fish Story", 1989-1995

Diptych; cibachrome prints

Frame: 26 1/8 x 66 1/2 x 2 1/2 in. (66.4 x 168.9 x 6.3 cm)

Edition of 5
(22674)



Blockade 1 from "Freeway to China", 1998-1999

Cibachrome print

Frame: 15 1/2 x 21 x 2 1/2 in. (39.4 x 53.3 x 6.3 cm)

Edition of 3
(22682)

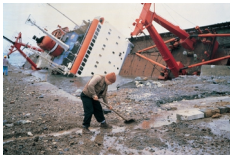


Seamstress and Apprentice, SNCF Workshop from "TITANIC's wake", 1998/2000

Diptych; cibachrome prints

Frame: 26 3/8 x 67 3/4 x 2 1/2 in. (67 x 172.1 x 6.3 cm)

Edition of 3
(22678)



Shipwreck and Worker, Istanbul from "TITANIC's wake", 1998/2000

Cibachrome print

Frame: 40 x 55 1/4 x 2 1/2 in. (101.6 x 140.3 x 6.3 cm)

Edition of 5 plus 1 artist's proof
(22679)



Engine room wiper's ear protection from "Fish Story", 1989-1995

Cibachrome print

Frame: 20 x 24 1/2 x 1 3/4 in. (50.8 x 62.2 x 4.4 cm)

(22676)



Koreatown, Los Angeles, 1992 from "Fish Story", 1989-1995

Cibachrome print

Frame: 40 x 28 1/2 x 2 1/2 in. (101.6 x 72.4 x 6.3 cm)

Edition of 5
(22673)

NEW YORK PARIS LONDON

WWW.MARIANGOODMAN.COM

MARIAN GOODMAN GALLERY



Man sleeping under a eucalyptus tree, Embarcadero park, (SD) from "Fish Story", 1989-1995

Cibachrome print

Frame: 20 x 27 3/8 x 1 3/4 in. (50.8 x 69.5 x 4.4 cm)
(22677)



Europa, 2011

Chromogenic print

Image: 47 1/4 x 70 1/4 in. (120 x 178.4 cm)
Frame: 49 1/4 x 72 1/2 x 2 1/2 in. (125 x 184 x 6.35 cm)
Edition of 2
(22118)

North Gallery Viewing Room:



Portrait of Kaela Economou, beaten by the Seattle police, 2 December 1999 from "TITANIC'S wake", 1998/2000

Cibachrome print

Frame: 28 3/8 x 39 3/8 x 2 1/2 in. (72.1 x 100 x 6.3 cm)
(22800)



Waiting for Tear Gas [white globe to black], 1999-2000

Slide projection plus wall text; 81 35mm slides in sequence;
10 sec. each projection interval; continuous projection
13 1/2 min. total

Edition of 5 plus 1 artist's proof
(22672)

South Gallery:



*Cannery, Sanzal from "Dead Letter Office", 1996-1997
[Enlatadora de atún, Sanzal.]*

Triptych; cibachrome prints

Frame: 19 7/8 x 78 1/4 x 2 1/2 in. (50.5 x 198.8 x 6.3 cm)
(22685)



*Impounded Chinese immigrant-smuggling ship and
abandoned Russian fishing boat, Ensenada
from "Dead Letter Office", 1996-1997*

*[Barco contrabandista (embargado) de inmigrantes chinos y pesquero ruso
abandonado, Ensenada.]*

Triptych; cibachrome prints

Frame: 19 3/4 x 78 1/4 x 2 1/2 in. (50.2 x 198.8 x 6.3 cm)
(22684)

NEW YORK PARIS LONDON

WWW.MARIANGOODMAN.COM

MARIAN GOODMAN GALLERY



Hyundai container factory and trucker's graffiti, Tijuana from "Dead Letter Office", 1996-1997

[Fábrica de contenedores de Hyundai y graffiti camionero, Tijuana.]

Diptych; cibachrome prints

Frame: 24 3/4 x 66 x 2 1/2 in. (62.9 x 167.6 x 6.3 cm) (each)

(22687)



Twentieth Century Fox Set for Titanic, Popotla, Baja California from "Dead Letter Office", 1996-1997

[Set de la Twentieth Century Fox para El Titanic, Popotla, Baja California.]

Diptych; cibachrome prints

Frame: 27 1/4 x 68 1/4 x 2 1/2 in. (69.2 x 173.4 x 6.3 cm)

(22686)



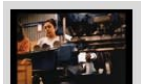
Carnival Cruise Lines ship departing Ensenada for Los Angeles from "Dead Letter Office", 1996-1997

[Nave Holiday de la compañía Carnival Cruise Lines, zarpando de Ensenada para Los Angeles.]

Diptych; cibachrome prints

Frame: 24 3/4 x 66 x 2 1/2 in. (62.9 x 167.6 x 6.3 cm)

(22697)



Tuna cannery, Ensenada from "Dead Letter Office", 1996-1997

[Enlatadora de atún, Ensenada.]

Diptych; cibachrome prints

Frame: 27 x 38 1/4 x 2 1/2 in. (68.6 x 97.2 x 6.3 cm) (each)

(22690)



Twentieth Century Fox set for Titanic and mussel gatherers, Popotla from "Dead Letter Office", 1996-1997

[Set de la Twentieth Century Fox para El Titanic y recolectores de mejillones, Popotla.]

Diptych; cibachrome prints

Frame: 24 3/4 x 65 7/8 x 2 1/2 in. (62.9 x 167.3 x 6.3 cm)

(22639)



Coffin factory, Tijuana from "Dead Letter Office", 1996-1997

[Fábrica de ataúdes, Tijuana.]

Diptych; cibachrome prints

Frame: 24 3/4 x 66 x 2 1/2 in. (62.9 x 167.6 x 6.3 cm)

(22695)

NEW YORK PARIS LONDON

WWW.MARIANGOODMAN.COM

MARIAN GOODMAN GALLERY



Throwing a line, Ensenada from "Dead Letter Office", 1996-1997

[Lanzando la cuerda, Ensenada.]

Diptych; cibachrome prints

Frame: 24 1/2 x 66 x 2 1/2 in. (62.2 x 167.6 x 6.3 cm)

(22691)



Ensenada longshoremen loading luggage of passengers bussed in from SD to meet the Carnival Cruise ship Tropicale bound for Honolulu from "Dead Letter Office", 1996-1997

[Estibadores de Ensenada cargando el equipaje de los pasajeros que llegaron de San Diego en autobuses para embarcar en la nave Tropicale de la compañía Carnival Cruise Lines, con rumbo a Honolulu.]

Diptych; cibachrome prints

Frame: 24 3/4 x 66 x 2 1/2 in. (62.9 x 167.6 x 6.3 cm)

(22692)



Lobbyist's son at the Republican convention, San Diego; Scavenger at work during the Republican convention, San Diego from "Dead Letter Office", 1996-1997

[Hijo de un defensor republicano durante la convención, San Diego; Basurero durante la convención republicana.]

Diptych; cibachrome prints

Frame: 27 1/2 x 38 1/4 x 2 in. (69.8 x 97.2 x 5.1 cm) (each)

(22688)



Republican boat ride, San Diego from "Dead Letter Office"; "Free speech area" outside the Republican convention, San Diego from "Dead Letter Office", 1996-1997

[Recorrido en barco de republicanos, San Diego; "Zona de la Libertad de Palabra" frente a la convención republicana, San Diego.]

Diptych; cibachrome prints

Frame: 27 1/2 x 38 1/4 x 2 1/2 in. (69.8 x 97.2 x 6.3 cm) (each)

(22689)



Navy photographer and marines participating in amphibious landing exercise, Camp Pendleton from "Dead Letter Office", 1996-1997

[Fotografo de la Marina y Marines durante un ejercicio de aterrizaje marítimo, Camp Pendleton.]

Diptych; cibachrome prints

Frame: 24 3/4 x 66 x 2 1/2 in. (62.9 x 167.6 x 6.3 cm)

(22693)

NEW YORK PARIS LONDON

WWW.MARIANGOODMAN.COM

MARIAN GOODMAN GALLERY



*ABC news crew covering the Republican convention, San Diego
from "Dead Letter Office", 1996-1997*

[Equipo de video de ABC News cubriendo la Convención Republicana, San Diego.]

Dptych; cibachrome prints

Frame: 24 3/4 x 66 1/4 x 2 1/2 in. (62.9 x 168.3 x 6.3 cm)
(22694)



*Shipyard welder cutting steel for Hyundai truck chassis, Ensenada from "Dead
Letter Office", 1996-1997*

*[Soldador en los astilleros cortando acero para el chasis de una camioneta
Hyundai, Ensenada.]*

Cibachrome print

Frame: 27 1/2 x 38 1/4 x 2 1/2 in. (69.8 x 97.2 x 6.3 cm)
(22698)



*Metal-workers employed by a Hyundai subcontractor signing authorization papers
for an independent union, Tijuana
from "Dead Letter Office", 1996-1997*

*[Obreros metalúrgicos empleados de una filial de Hyundai, firmando la
autorización de un sindicato independiente, Tijuana.]*

Cibachrome print

Frame: 27 1/2 x 38 3/8 x 2 1/2 in. (69.8 x 97.5 x 6.3 cm)
(22696)