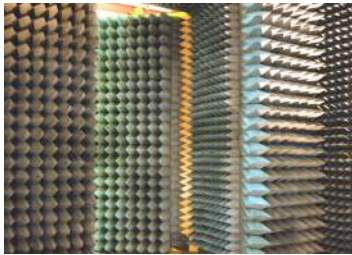


GALERIE MARIAN GOODMAN

Museum Of Modern Art and Western Antiquities
Department of Light Recordings, Section IV: Lens Drawings



LEWIS BALTZ

*Anechoic Chamber, France Télécom Laboratoires
Lannion, 1989-91*

From the series Sites of Technology

tirage chromogénique sur diasec / C-print, on
Diasec

108 x 144 cm

Edition 4 of 10 + 2AP



UTA BARTH

Untitled (06.8), 2006

Photo contrecollées (4 panneaux) / Mounted
color photographs (4 panels)

Each panel 58,42 cm x 53,43 cm (23 x 21 inches)

4 panels: 58,42 x 219, 1 (23 x 86 ¼ inches)

Edition 4 of 6



LOTHAR BAUMGARTEN

*Norfolk Southern Corp; Calumet Yard; Chicago,
Illinois, 1989*

Tirage gélatino-argentique en n&b / B&W gelatin
silver print

3 of 3

69 x 84 cm



LOTHAR BAUMGARTEN

*Missouri Pacific System, Lewis Clark Viaduct,
1989*

Tirage gélatino-argentique en n&b / B&W gelatin
silver print

3 of 3

69 x 84 cm



WALEAD BESHTY

Lifting (John Ryan: Los Angeles, August 4, 2011)

2011

tirage numérique noir et blanc sur papier fibre /
B&W digital fiber prints

34,9 x 51,1 cm (13 3/4 x 20 1/8 in.)

Edition 1 of 3 + 1AP

GALERIE MARIAN GOODMAN

Museum Of Modern Art and Western Antiquities
Department of Light Recordings, Section IV: Lens Drawings



WALEAD BESHTY

Vacuuming (Beijing, September 21, 2011) 2011
tirage numérique noir et blanc sur papier fibre /
B&W digital fiber prints
34,9 x 51,1 cm (13 3/4 x 20 1/8 in.)
Edition 1 of 3 + 1AP



WALEAD BESHTY

Adjusting (Gaël: Brussels, September 13, 2011)
2011
tirage numérique noir et blanc sur papier fibre/
B&W digital fiber prints
34,9 x 51,1 cm (13 3/4 x 20 1/8 in.)
Edition 1 of 3 + 1AP



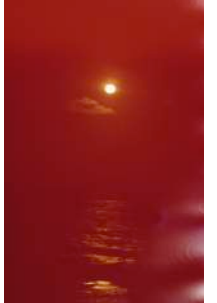
WALEAD BESHTY

Measuring (Tanya: Los Angeles, August 30, 2011), 2011
tirage numérique noir et blanc sur papier fibre/
B&W digital fiber prints
34,9 x 51,1 cm (13 3/4 x 20 1/8 in.)
Edition 1 of 3 + 1AP



LUCAS BLALOCK

Record Collection, 2011
tirage chromogénique / Chromogenic print
Frame 64 x 52 cm (25 x 20.5 inches)
Edition 3 of 3 + 2AP



MARK BORTHWICK

Lovemarks, 2003, Tulum, Mexico
Tirage jet d'encre / Inkjet print
152,4 x 101,6 cm

GALERIE MARIAN GOODMAN

Museum Of Modern Art and Western Antiquities
Department of Light Recordings, Section IV: Lens Drawings



JOSH BRAND

Skull into Mirror, 2011

Tirage chromogénique / c-print

15.2 x 10 cm (6 x 4 in)

48.4 x 35.7 cm (19.1 x 14.1 in)

Unique



JEAN-MARC BUSTAMANTE

T.4.01, 2001

Tirage chromogénique / C-print

240 x 160 cm / 94.49 x 62.99 inches

Ed. 3/6



TALIA CHETRIT

Untitled (Studio 3), 2013

tirage chromogénique numérique / Digital C-print

96,5 x 71 cm (38 x 28 inches)

Edition 3/4



ANNE COLLIER

French Still Life # 1 (Postcard), 2012

Tirage chromogénique / C-print

Framed 72,7 x 59 cm (28 5/8 x 23 ¼ in)

Edition 1/5, 2APs

ANNE COLLIER

French Still Life # 2 (Postcard), 2012

Tirage chromogénique / C-print

Framed 72,7 x 59 cm (28 5/8 x 23 ¼ in)

Edition 1/5, 2APs

GALERIE MARIAN GOODMAN

Museum Of Modern Art and Western Antiquities
Department of Light Recordings, Section IV: Lens Drawings



SARAH CONAWAY

The Conversation in the Garden, 2012

Tirage chromogénique / C-print

55,7 x 45 cm

Ed 3 of 3



SARAH CONAWAY

The Oval, 2012

Tirage chromogénique / C-print

72,3 x 91,4 cm (28 1/2 x 36 in.)

Ed 3 of 3



LUC DELAHAYE

Patio civil, cimiterio San Rafael, Málaga (2009)

October 6, 2009

Tirage chromogénique / C-print

251 x 207,1 cm (81"1/2 x 98" 3/4)



THOMAS DEMAND

Daily#11, 2009

Impression par transfert d'encre/ Dye transfer
print

image 65,4 x 74,4 cm (25 3/4 x 29 1/4 in.)

frame 73,4 x 82,4 x 5,2 cm (29 x 32 3/8 in.)

Ed 3 of 6



LIZ DESCHENES

Untitled (Arago), 2013

deux tirages teintés au gelatino-bromure

d'argent contrecollés sur aluminium / two silver
toned silver gelatin prints

152,4 x 50,8 cm (60 x 20 inches)

Unique

GALERIE MARIAN GOODMAN

Museum Of Modern Art and Western Antiquities
Department of Light Recordings, Section IV: Lens Drawings



RINEKE DIJKSTRA

Taryn Simon London, England, June 25, 2011

tirage chromogénique / C-print

frame 61 x 72 cm

ed. 1 of 10



SAUL FLETCHER

Untitled # 236 (Dad 1994), 94/2011

Tirage gélatino argentique/ silver gelatin print

image 18,09 x 17,78 cm (7 1/8 x 7 in)

Paper 30,4 x 23,81 (12 x 9 3/9 in.)

Edition 2/5



SAUL FLETCHER

Untitled # 236 (Mum 1994), 94/2011

tirage gélatino argentique/ silver gelatin print

image 18,09 x 17,78 cm (7 1/8 x 7 in)

Paper 30,4 x 23,81 (12 x 9 3/9 in.)

Edition 2/5



LEE FRIEDLANDER

Las Vegas, 1997

tirage gélatino argentique/ gelatin silver print

image 38,1 x 37,5 cm (15 x 14 3/4 inches)

Paper 50,8 x 40,6 cm (20 x 16 in.)



AMY GRANAT

Poppies, 2012

tirage RC- contrecollé sur aluminium / RC -prints
mounted on aluminium

Image 240 x 150 cm (94 1/2 x 59 in.)

Frame 248 x 157 x 6 cm (97 5/8 x 61 3/4 x 2 3/8)

Unique

GALERIE MARIAN GOODMAN

Museum Of Modern Art and Western Antiquities
Department of Light Recordings, Section IV: Lens Drawings



JOHN HOUCK

Untitled #223, 65,535 combinations of a 2x2 grid, 16 colors, 2013

tirage plié, pigments sur papier de qualité archive / Creased archival pigment print
76.2 x 61 cm (30 x 24 inches)
Unique



JOHN HOUCK

Untitled #242, 104, 975 combinations of a 2x2 grid, 18 colors, 2013

tirage plié, pigments sur papier de qualité archive / Creased archival pigment print
76,2 x 61 cm (30 x 24 in.)
Unique



JOHN HOUCK

Peg and Jon, 2013

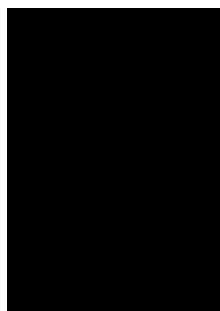
tirage chromogénique / C-print
55.9 x 68.6 cm (22 x 27 inches)
Edition 1/3, 1AP



BARBARA KASTEN

Studio Construct 51, 2008

tirage avec pigments sur papier de qualité archive / Archival pigment print
127 x 101,6 cm
Ed 3/5



ANNETTE KELM

Untitled (Cardboard Paisley, Close Up), 2013

Tirage chromogénique / c-print
image 87.3 x 61 cm (34 1/3 x 24 in)
frame 90.3 x 64 x 4 cm (35 1/2 x 25 1/4 x 1 1/2 in.)
5/5 + 2AP

GALERIE MARIAN GOODMAN

Museum Of Modern Art and Western Antiquities
Department of Light Recordings, Section IV: Lens Drawings



JOSH KOLBO

Untitled, 2012

12 tirages chromogéniques / 12 C-print

335 x 270 x 60 cm (132 x 106 x 24 in.)

Unique



LUISA LAMBRI

Untitled (Sheats-Goldstein House #07), 2007

tirage laserchrome/ laserchrome print

84 x 71,6cm (33 1/8 x 28 1/4 in.)

Ed.3/5 + 1AP



ELAD LASSRY

Chocolate Bars, Eggs, Milk, 2013

Tirage chromogénique / C-print, painted frame

36,8 x 29,2 x 3,8 cm (14.5" x 11.5" x 1.5" inches)

Edition 1 of 5 with 2APS



ELAD LASSRY

Waves (Red), 2013

Tirage chromogénique / C-print, painted frame

36,8 x 29,2 x 3,8 cm (14.5" x 11.5" x 1.5" inches)

Edition 3 of 5 with 2APS



ELAD LASSRY

Men (055, 065), 2012

Tirage gélatino-argentique/ Silver gelatin print,
walnut frame

36,8 x 29,2 x 3,8 cm (14.5" x 11.5" x 1.5" inches)

Edition 4 of 5 with 2 APs

GALERIE MARIAN GOODMAN

Museum Of Modern Art and Western Antiquities
Department of Light Recordings, Section IV: Lens Drawings



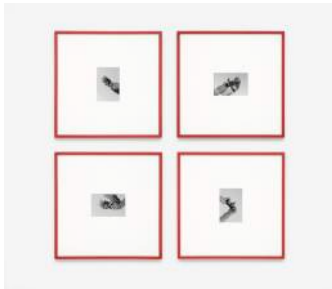
LEIGH LEDARE

Glossy, 2002

tirage gélatino argentique / Silver gelatin print

57,5 x 45,5 x 4,5 cm

Edition 4/5

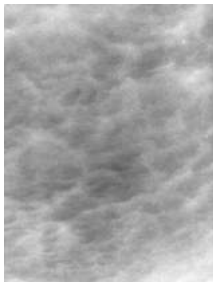


TIM LEE

Untitled (Alexander Rodchenko, 1928), 2008

4 photos noir et blanc, cadres conçus par
l'artiste / 4 B&W photos in red artist's frame
size unframed: 15,3 x 23 cm each (6 x 9 in)
framed size: 71 x 71 cm (30 x 30 in.)

Edition 2 /7 + 3AP



JOCHEN LEMPERT

Cloud Cover, 2013

b/w gelatin silver print / tirage gélatino-
argentique n&b

104 x 79 cm

Ed. 2/5



HANNA LIDEN

Thank you have a nice day, 2012

tirage chromogénique sur sintra / C-print on
sintra

63,25 x 48,75 in.

Edition 2 of 3



ARMIN LINKE

Whirlwind, Pantellaria Italy, 2007

Tirage chromogénique / c-print

150 x 200 cm

Ed. 2 of 5 + 2 AP

GALERIE MARIAN GOODMAN

Museum Of Modern Art and Western Antiquities
Department of Light Recordings, Section IV: Lens Drawings



SHARON LOCKART

cat-on-the-shoulder, for Jean-Pierre Beauviala,
2011

tirage chromogénique / C-print

63 x 50,8 cm (20 x 25 inches)

Edition 5/6 (Ed. of 6 +2 APs)



JEAN-LUC MOULENE

Choux, Fénautrigues, Lot, Fr., janvier 2003, 2012

bromure noir et blanc sur dibond/ bromure B&W
mounted on dibond

Framed 144,50 x x 144,50 x 6 cm (48 7/8 x 48 7/8
x 2 3/8)

Edition 1/ 3 + 2AP



CATHY OPIE

Untitled #8, 2012

Impression pigmentaire/ pigment print

image 101,6 x 152,4 cm (40 x 60 in)

framed 111,6 x 161,3 cm (43 4/3 x 63 1/2 in.)

Edition 1/5 +2APs



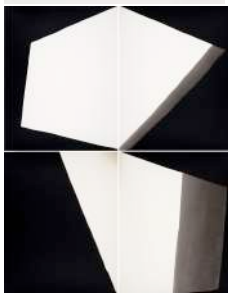
EILEEN QUINLAN

Highlands #3, 2010

Tirage chromogénique sur Plexiglas / C-print
mounted on plexiglass

101,6 x 76,2 cm)(40 x 30 in.)

Edition 1 of 3 (+2APs)



ALISON ROSSITER

*Gevaert Gevarto 48 K, exact expiration date
unknown, ca. 1960s, processed 2013 (#10)*

Quatre tirages gélatino-argentique / Four Unique
Gelatin Silver Prints

14" x 11" (35.6 x 27.9 cm) each element

Frame size: 31 13/16" x 25 13/16" x 1 9/16"

Unique

Inv.# 14668

GALERIE MARIAN GOODMAN

Museum Of Modern Art and Western Antiquities
Department of Light Recordings, Section IV: Lens Drawings



MELANIE SCHIFF

Lemon Tree, 2012

Impression jet d'encre contrecollée/ inkjet print
on paper mounted and framed

Image 36 x 28,75 in.

Framed 92,7 x 74,9 cm (36,5 x 29,5 in.)

Edition 5 of 5, 1AP



COLLIER SCHORR

Hydra, 2013

Tirage gélatino-argentique / Silver gelatin print
image size: 94 x 94 (37 x 37 in.)

Edition 1 of 5



BRUNO SERRALONGUE

Chemin à l'aube 1, Calais, juillet 2006, 2006

Série Calais

Ilfochrome contrecollé sur aluminium,
encadrement Plexiglas

Image 125 x 158 cm / Frame 126 x 159 cm

Edition 1 of 5

Inv.# 14674



SHIRANA SHAHBAZI

[Komposition-46-2012]

Tirage chromogénique sur aluminium / C-print
on aluminium

framed in white glazed maple frame, behind non-
reflective glass

150 x 120 cm (59 x 47 1/4 in)

Edition. 1 of 5 (+ 1 AP)



ERIN SHIRREFF

A.P. (no.1), 2012

tirage plié de pigments sur papier de qualité
archive / Archival pigment print with fold

86,36 x 116,84 cm (34 x 46 inches)

Edition 3 of 4 + 2AP



STEPHEN SHORE

*Home of Abram and Malka Dikhtayar, Bazalia,
Ukraine, July 27, 2012, 2012* (printed 2013)

Tirage chromogénique couleurs / color c-print

Image 40.6 x 50.8 cm (16 x 20 inches)

Paper 50.8 x 61 cm (20 x 24 inches)

Edition 1 of 8

GALERIE MARIAN GOODMAN

Museum Of Modern Art and Western Antiquities
Department of Light Recordings, Section IV: Lens Drawings



STEPHEN SHORE

Home of Abram and Malka Dikhtayar, Bazalia, Ukraine, July 27, 2012, 2012 (printed 2013)

Tirage chromogénique couleurs / Chromogenic color print

Image 40.6 x 50.8 cm (16 x 20 inches)

Paper 50.8 x 61 cm (20 x 24 inches)

Edition 1 of 8



STEPHEN SHORE

Home of Abram and Malka Dikhtayar, Bazalia, Ukraine, July 27, 2012

2012 (printed 2013)

Tirage chromogénique couleurs / Chromogenic color print

Image 40.6 x 50.8 cm (16 x 20 inches)

Paper 50.8 x 61 cm (20 x 24 inches)

Edition 1 of 8



ALEC SOTH

Fairway Motor Inn, 2005

Tirage chromogénique numérique contrecollé sur dibond / Digital chromogenic print mounted on dibond

Image 101,6 x 127 cm (40 x 50 in)

paper 121,9 x 147,3 cm (48 x 58 in)

framed 124,5 x 149,9 cm (49 x 59 in)

Edition of 7 with 3APs , 4/7



THOMAS STRUTH

Tokamak Asdex Upgrade Interior 1, Max Plack IPP, Garching, 2010

Tirage chromogénique / Chromogenic Print

Edition 2 of 6

paper 268,3 x 218 cm

frame 275,8 x 225 cm

Inv.# 13085

GALERIE MARIAN GOODMAN

Museum Of Modern Art and Western Antiquities
Department of Light Recordings, Section IV: Lens Drawings



JEFF WALL

Young Man Wet with Rain, 2011

Tirage gélatino argentique / Silver Gelatin Print

284,16 x 158,75 x 6,35 cm

Inv.# 13261



JAMES WELLING

Easel, 2011

impression jet d'encre, peinture acrylique,
aquarelle/ Inkjet print, acrylic paint, watercolor

image 57,8 x 43,5 cm (22 ¾ x 17 1/8 in)

frame 63,5 x 49,5 x 2,5 cm (25 x 19 ½ x 1 in.)

Unique



CHRIS WILEY

11, 2012

Tirage avec pigments sur papier de qualité
archive contrecollé sur aluminium/ Archival
inkjet print mounted on aluminum in custom
plywood frame

Frame: 66,5 x 45 cm (26 1/4 x 18 3/8 in.)

Edition 3 of 4



CHRIS WILEY

20, 2012

Tirage avec pigments sur papier de qualité
archive contrecollé sur aluminium/ Archival
inkjet print mounted on aluminum in custom
plywood frame

framed size: 65 x 45,2 cm (26 1/4 x 18 3/8 in.)

Edition 4 of 4