

MARIAN GOODMAN GALLERY

Gerhard Richter

14 October – 20 December 2014

Marian Goodman Gallery, London.

Reception gallery



25 Farben 902-2, 2007
Enamel on Alu Dibond
19 1/8 x 19 1/8 in. (48.7 x
48.7 cm)
No. 16089

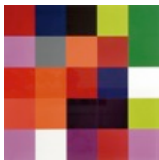


25 Farben 902-49, 2007
Enamel on Alu Dibond
19 1/8 x 19 1/8 in. (48.7 x
48.7 cm)
No. 16091



25 Farben 902-8, 2007
Enamel on Alu Dibond
19 1/8 x 19 1/8 in. (48.7 x
48.7 cm)
No. 16090

Upper gallery, viewed from Reception



25 Farben 902-33, 2007
Enamel on Alu Dibond
19 1/8 x 19 1/8 in. (48.7 x
48.7 cm)
No. 16220

Lower main gallery

Clockwise from entrance



Bagdad 914-1, 2010
Enamel on back of glass
mounted on Alu Dibond
19 5/8 x 15 11/16 in. (50
x 40 cm)
No. 16073



7 Scheiben (Kartenhaus) 932-2,
2013
Glass and steel
construction
101 1/8 x 255 7/8 x 141
11/16 in. (257 x 650 x 360
cm)
No. 16087



Abstraktes Bild 869-9, 2000
Oil on Alu Dibond
19 5/8 x 13 3/4 in.
50 x 35 cm
No. 16082



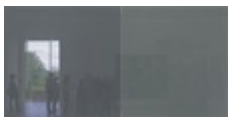
Abstraktes Bild 882-3, 2003
Oil on Alu Dibond
19 5/8 x 13 3/4 in.
50 x 35 cm
No. 16083



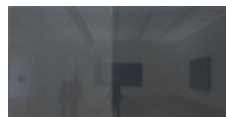
Doppelgrau 935-4, 2014
Enamel on back of glass
78 11/16 x 157 7/16 in.
(200 x 400 cm)
No. 16079



Doppelgrau 935-3, 2014
Enamel on back of glass
78 11/16 x 157 7/16 in.
(200 x 400 cm)
No. 16078



Doppelgrau 935-2, 2014
Enamel on back of glass
78 11/16 x 157 7/16 in.
(200 x 400 cm)
No. 16077



Doppelgrau 935-1, 2014
Enamel on back of glass
78 11/16 x 157 7/16 in.
(200 x 400 cm)
No. 16076

MARIAN GOODMAN GALLERY



Flow 933-5, 2013
Enamel on glass mounted
on Alu Dibond
41 5/16 x 82 5/8 in. (105 x
210 cm)
No. 15240

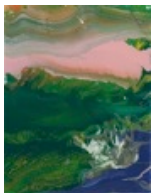
Corridor gallery



Abstraktes Bild 875-3, 2001
Oil on canvas
20 7/16 x 18 1/2 in. (52 x
47 cm)
No. 16080



Strip 929-2, 2013
Digital print on paper
mounted between Alu
Dibond and perspex
(diasec)
47 3/16 x 55 1/16 in. (120
x 140 cm)
No. 16048



Flow 934-15, 2013
Enamel on glass mounted
on Alu Dibond
17 11/16 x 13 3/4 in. (45 x
35 cm)
No. 16069



Flow 934-16, 2013
Enamel on glass mounted
on Alu Dibond
17 11/16 x 13 3/4 in. (45 x
35 cm)
No. 16070

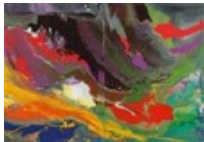


Flow 934-17, 2013
Enamel on glass mounted
on Alu Dibond
17 11/16 x 13 3/4 in. (45 x
35 cm)
No. 16071



Flow 934-18, 2013
Enamel on glass mounted
on Alu Dibond
17 11/16 x 13 3/4 in. (45 x
35 cm)
No. 16072

Private gallery



Flow 933-1, 2013
Enamel on glass mounted
on Alu Dibond
47 3/16 x 66 7/8 in. (120 x
170 cm)
No. 16052



Strip 926-7, 2012
Digital print on paper
mounted between Alu
Dibond and perspex
(diasec)
59 x 118 1/16 in. (150 x
300 cm)
No. 16040

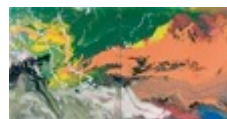


Gran hinter Glas 876-6, 2002
Oil on glass
47 5/8 x 35 13/16 in. (121
x 91 cm)
No. 16086

Lower side gallery



Flow 933-6, 2013
Enamel on glass mounted
on Alu Dibond
41 5/16 x 82 5/8 in. (105 x
210 cm)
No. 16066



Flow 933-2, 2013
Enamel on glass mounted
on Alu Dibond
39 5/16 x 78 11/16 in. (100
x 200 cm)
No. 16053

MARIAN GOODMAN GALLERY



Flow 933-4, 2013
Enamel on glass mounted
on Alu Dibond
41 5/16 x 82 5/8 in. (105 x
210 cm)
No. 16055



Flow 933-3, 2013
Enamel on glass mounted
on Alu Dibond
39 5/16 x 78 11/16 in. (100
x 200 cm)
No. 16054

Upper main gallery
Clockwise from entrance.



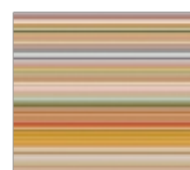
Strip 927-7, 2012
Digital print on paper
mounted between Alu
Dibond and perspex
(diasec)
82 5/8 x 90 1/2 in. (210 x
230 cm)
No. 16044



Strip 927-8, 2012
Digital print on paper
mounted between Alu
Dibond and perspex
(diasec)
82 5/8 x 90 1/2 in. (210 x
230 cm)
No. 16045



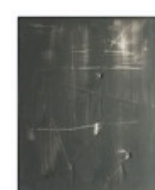
Strip 927-11, 2012
Digital print on paper
mounted between Alu
Dibond and perspex
(diasec)
82 5/8 x 90 1/2 in. (210 x
230 cm)
No. 16046



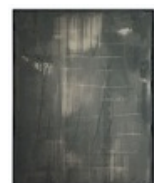
Strip 927-1, 2012 Digital
print on paper mounted
between
Alu Dibond and perspex
(diasec) 82 5/8 x 90 1/2 in.
(210 x 230 cm) No. 16041



Strip 930-1, 2013
Digital print on paper
mounted between Alu
Dibond and perspex
(diasec)
78 11/16 x 393 11/16 in.
(200 x 1000 cm)
No. 16050



Grau hinter Glas 883-1, 2003
Oil on glass
39 5/16 x 31 7/16 in. (100
x 80 cm)
No. 16084



Grau hinter Glas 883-2, 2003
Oil on glass
39 5/16 x 31 7/16 in. (100
x 80 cm)
No. 16085



Ifrit 915-20, 2010
Enamel on back of glass
mounted on Alu Dibond
12 15/16 x 17 1/8 in. (33 x
43.5 cm)
No. 16075

Upper side gallery



2.5.2009, 2009
Oil on photograph
14 1/8 x 17 11/16 x 9/16
in. (36 x 45 x 1.5 cm)
No. 16195



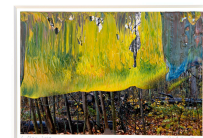
3.5.2009, 2009
Oil on photograph
14 1/8 x 17 11/16 x 9/16
in. (36 x 45 x 1.5 cm)
No. 16198



4.5.2009, 2009
Oil on photograph
14 1/8 x 17 11/16 x 9/16
in. (36 x 45 x 1.5 cm)
No. 16199



5.5.2009, 2009
Oil on photograph
14 1/8 x 17 11/16 x 9/16
in. (36 x 45 x 1.5 cm)
No. 16200



6.5.2009, 2009
Oil on photograph
14 1/8 x 17 11/16 x 9/16
in. (36 x 45 x 1.5 cm)
No. 16201

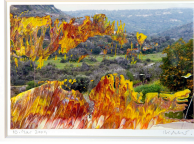


7.5.2009, 2009
Oil on photograph
14 1/8 x 17 11/16 x 9/16
in. (36 x 45 x 1.5 cm)
No. 16202

MARIAN GOODMAN GALLERY



8.5.2009, 2009
Oil on photograph
14 1/8 x 17 11/16 x 9/16
in. (36 x 45 x 1.5 cm)
No. 16203



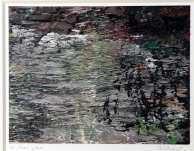
10.5.2009, 2009
Oil on photograph
14 1/8 x 17 11/16 x 9/16
in. (36 x 45 x 1.5 cm)
No. 16205



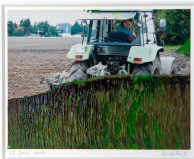
12.5.2009, 2009
Oil on photograph
14 1/8 x 17 11/16 x 9/16
in. (36 x 45 x 1.5 cm)
No. 16207



14.5.2009, 2009
Oil on photograph
14 1/8 x 17 11/16 x 9/16
in. (36 x 45 x 1.5 cm)
No. 16209



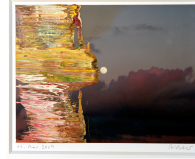
16.5.2009, 2009
Oil on photograph
14 1/8 x 17 11/16 x 9/16
in. (36 x 45 x 1.5 cm)
No. 16211



25.6.2009, 2009
Oil on photograph
14 1/8 x 17 11/16 x 9/16
in. (36 x 45 x 1.5 cm)
No. 16213



9.5.2009, 2009
Oil on photograph
14 1/8 x 17 11/16 x 9/16
in. (36 x 45 x 1.5 cm)
No. 16204



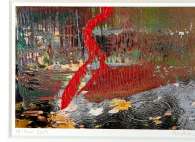
11.5.2009, 2009
Oil on photograph
14 1/8 x 17 11/16 x 9/16
in. (36 x 45 x 1.5 cm)
No. 16206



13.5.2009, 2009
Oil on photograph
14 1/8 x 17 11/16 x 9/16
in. (36 x 45 x 1.5 cm)
No. 16208



15.5.2009, 2009
Oil on photograph
14 1/8 x 17 11/16 x 9/16
in. (36 x 45 x 1.5 cm)
No. 16210



17.5.2009, 2009
Oil on photograph
14 1/8 x 17 11/16 x
9/16 in. (36 x 45 x 1.5
cm)



No. 16212
Strip 930-2, 2013
Digital print on paper
mounted between Alu
Dibond and perspex
(diasec)
78 11/16 x 393 11/16 in.
(200 x 1000 cm)
No. 16051