

# MARIAN GOODMAN GALLERY

Summer Selections  
Marian Goodman Gallery, New York  
June 28 – August 24, 2018

## NORTH GALLERY



### Adrián Villar Rojas

*From the series The Theater of Disappearance (XXXIV), 2015-2018*

Stratified formation of concrete, cement, white cement, sand, coconuts and pigments (from the exhibition: *Plantetarium*, United Arab Emirates, 2015), polyurethane resin, concrete and recycled base rock

Overall: 34 x 205 x 11 3/4 in. (86.4 x 520.7 x 29.8 cm)

Work: 21 1/4 x 205 x 11 3/4 in. (54 x 520.7 x 29.8 cm)

Plinth: 12 3/4 x 205 x 11 3/4 in. (32.4 x 520.7 x 29.8 cm)  
(20867)



### Lawrence Weiner

*STACKS OF SEVERED TREES LAID BESIDE A FISSURE IN THE EARTH, 2007*

LANGUAGE + THE MATERIALS REFERRED TO  
(11336)



### Nairy Baghramian

*Chin Up (First Fitting A), 2016*

2 parts; Waxed wood, polished and lacquered aluminum

Overall: 127 x 161 x 45 1/2 in. (322.6 x 408.9 x 115.6 cm)

Left element: 127 x 61 x 45 1/2 in. (322.6 x 154.9 x 115.6 cm)

Right element: 93 x 59 x 35 1/4 in. (236.2 x 149.9 x 89.5 cm)  
(21158)



### Nairy Baghramian

*Chin Up (First Fitting C), 2016*

2 parts; Waxed wood, polished and lacquered aluminum

Overall: 62 x 289 x 36 3/4 in. (157.5 x 734.1 x 93.3 cm)

Left element: 48 1/8 x 109 1/2 x 36 3/4 in. (122.3 x 278 x 93.3 cm)

Right element: 58 x 177 1/4 x 31 1/2 in. (147.3 x 450.1 x 80 cm)  
(21160)



### Thomas Struth

*Space Shuttle 2, Kennedy Space Center, Cape Canaveral, USA, 2008*

Chromogenic print

Image: 59 3/4 x 74 3/4 in. (151.8 x 189.9 cm)

Frame: 64 3/8 x 79 1/2 x 2 3/8 in. (163.5 x 201.9 x 6 cm)

Edition of 10 (#3/10)  
(12769/A)

NEW YORK    PARIS    LONDON

WWW.MARIANGOODMAN.COM

# MARIAN GOODMAN GALLERY

## NORTH GALLERY VIEWING ROOM



**Ettore Spalletti**

*Paesaggio, 16, 2016*

3 elements; color impasto on board

47 1/4 x 78 3/4 x 1 5/8 in. (120 x 200 x 4 cm) (overall)

15 3/4 x 78 3/4 x 1 5/8 in. (40 x 200 x 4 cm) (each)

(20307)



**Ettore Spalletti**

*Calma, 2016*

Color impasto on board, gold leaf

59 x 59 x 1 9/16 in. (150 x 150 x 4 cm)

(18117)



**Cerith Wyn Evans**

Untitled, 2018

Rezzonico chandelier, 12 lights with 3 central staffs; clear glass, silver metal parts, white candles with electric wire already mounted and replacement pieces included

Height: 59 1/8 in. (150 cm)

Diameter: 47 1/4 in. (120 cm)

(20844)

## CONFERENCE ROOM



**Gerhard Richter**

*Grau hinter Glas [883-2], 2003*

Oil on glass

Work: 39 3/8 x 31 1/2 in. (100 x 80 cm)

Frame: 39 5/8 x 31 3/4 x 1 in. (100.6 x 80.6 x 2.5 cm)

(SC/16085)



**Gerhard Richter**

*Grau hinter Glas [883-1], 2003*

Oil on glass

Work: 39 3/8 x 31 1/2 in. (100 x 80 cm)

Frame: 39 5/8 x 31 3/4 x 1 in. (100.6 x 80.6 x 2.5 cm)

(SC/16084)

## MARIAN GOODMAN GALLERY



### Hiroshi Sugimoto

*Gates of Paradise - 07 Moses, 2016*

Gelatin silver print

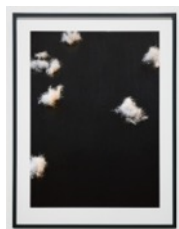
Neg. #37.007

Image: 44 7/8 x 35 7/8 in. (114 x 91 cm)

Frame: 58 x 48 7/8 x 4 1/8 in. (147.3 x 124.1 x 10.5 cm)

Edition of 7 (#2/7)

(20573)



### Lothar Baumgarten

*Firmament, 2014*

Image: 36 x 26 1/2 in. (91.4 x 67.3 cm)

Frame: 43 3/4 x 33 1/2 x 2 in. (111.1 x 85.1 x 5.1 cm)

Edition of 5 (#3/5)

(16965)

## SOUTH GALLERY



### John Baldessari

*The Difference Between Fête and Fate, 1987/2013*

Archival inkjet prints laminated with Lexan mounted on plexiglass with aluminum inset backing and archival inkjet prints with face mounted acrylic with aluminum inset backing

Cowboys: 28 x 132 x 3/4 in. (71.1 x 335.3 x 1.9 cm)

Eskimos 28 x 132 in. (71.1 x 335.3 cm)

Overall: 28 x 264 x 3/4 in. (71.1 x 670.6 x 1.9 cm)

Polar Bears: 94 x 115 3/4 x 1 1/8 in. (238.8 x 294 x 3 cm)

Burning Man: 94 x 98 x 1 in. (238.8 x 248.9 x 2.5 cm)

Couple: 59 x 36 x 3/4 in. (149.9 x 91.4 x 1.9 cm)

Owl: 27 1/2 x 36 x 1/2 in. (69.8 x 91.4 x 1.3 cm)

Bear: 27 1/2 x 36 x 1/2 in. (69.8 x 91.4 x 1.3 cm)

Fox: 27 1/2 x 36 x 1/2 in. (69.8 x 91.4 x 1.3 cm)

Monkey: 27 1/2 x 36 x 1/2 in. (69.8 x 91.4 x 1.3 cm)

Overall stack: 170 x 36 x 3/4 in. (431.8 x 91.4 x 1.9 cm)

Man in hat: 13 x 13 x 1/2 in. (33 x 33 x 1.3 cm)

Zig zag grouping: 40 1/2 x 70 1/2 x 3/4 in. (102.9 x 179.1 x 1.9 cm)

(14612/M)

NEW YORK    PARIS    LONDON

WWW.MARIANGOODMAN.COM