

MARIAN GOODMAN GALLERY

PIERRE HUYGHE

28 January – 12 March, 2011

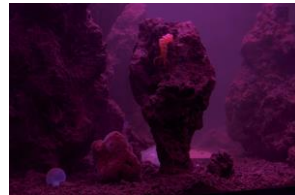
North Gallery (Clockwise from left)

1. *The Host and the Cloud*, 2009
Film transferred to HD video, color,
surround sound; 2 hours, 1 min, 30
sec
[12751]
2. *Crystal Cave*, 2009
3 dimensional photograph
image: 22 1/8 x 33 in. (56.2 x 83.8
cm)
frame: 25 x 35 7/8 x 1 5/8 in. (63.5 x
91.1 x 4.1 cm)
[13140]



North Viewing Room

3. *Aquarium Project (1)*, 2010
Live marine ecosystem, glass tank,
filtration system
40 x 35 x 30 in. (101.6 x 88.9 x 76.2
cm)
Consultation and fabrication of aquariums by Okeanos
Aquascaping
[13132]



MARIAN GOODMAN GALLERY

South Gallery (Clockwise from left)

4. *The Host and the Cloud (Mask)*, 2010
LED, brass, elastic, hand controller
and custom box packaging
5 7/8 x 6 1/4 x 9 1/2 in. (15 x 16 x 24
cm)
[12907]



5. *Aquarium Project (2)*, 2010
Live marine ecosystem, glass tank,
filtration system
32 x 53 x 39 in. (81.28 x 134.62 x
99.06 cm)
Consultation and fabrication of aquariums by Okeanos
Aquascaping
[13133]



6. *Aquarium Project (3)*, 2010
Live marine ecosystem, glass tank,
filtration system
32 x 40 x 68 in. (81.28 x 101.6 x
172.72 cm)
Consultation and fabrication of aquariums by Okeanos
Aquascaping
[13134]

