

GALERIE MARIAN GOODMAN

ROBERT SMITHSON
Mundus Subterraneus – Early Works
13 January – 24 February 2024

MAIN GALLERY - 79 RUE DU TEMPLE



Mars-Venus, 1961-63
Pencil, gouache, photo collage, watercolor on paper
Paper: 18 x 24 in. (45.7 x 61 cm)
Frame: 25 1/4 x 31 3/8 x 1 5/8 in. (64.2 x 79.8 x 4.1 cm)
(27961)



Paris in the Spring, 1963
Pencil with collage on paper
Paper: 20 x 14 in. (50.8 x 35.6 cm)
Frame: 27 1/2 x 21 1/8 x 1 5/8 in. (69.8 x 53.7 x 4 cm)
(24215)



Untitled, 1963
Gouache and collage
Paper: 17 3/4 x 14 in. (45.1 x 35.6 cm)
Frame: 24 1/2 x 21 3/4 x 1 5/8 in. (62.1 x 55.2 x 4 cm)
(24216)



Untitled, 1960
Gouache, ink on paper
Paper: 18 x 15 3/4 in. (45.7 x 40 cm)
Frame: 25 3/8 x 23 1/8 x 1 5/8 in. (64.4 x 58.7 x 4.2 cm)
(26445)



Hands Stigmata, 1961
Gouache on paper
Paper: 18 x 13 5/8 in. (45.7 x 34.6 cm)
Frame: 25 3/8 x 21 x 1 5/8 in. (64.5 x 53.2 x 4.1 cm)
(26438)



Feet of Christ, 1961
Gouache on paper
Paper: 18 x 14 in. (45.7 x 35.6 cm)
Frame: 25 3/8 x 21 3/8 x 1 3/4 in. (64.5 x 54.3 x 4.3 cm)
(26442)

79 RUE DU TEMPLE 75003 PARIS TEL. +33 1 48 04 70 52

WWW.MARIANGOODMAN.COM

GALERIE MARIAN GOODMAN



Untitled, 1961-63
Gouache on paper
Paper: 24 x 14 in. (61 x 35.6 cm)
Frame: 31 3/8 x 25 1/2 x 1 5/8 in. (79.7 x 64.7 x 4 cm)
(27965)



Creeping Jesus, 1961
Photo collage and gouache on paper
Paper: 18 x 14 in. (45.7 x 35.6 cm)
Frame: 25 3/8 x 21 5/8 x 1 5/8 in. (64.5 x 55 x 4.2 cm)
(26439)



Occult Books, 1963
Watercolor and collage on paper
Paper: 17 x 13 in. (43.2 x 33 cm)
Frame: 23 3/8 x 19 1/4 x 1 5/8 in. (59.5 x 49 x 4.2 cm)
(27981)



Untitled, 1964
Pencil and crayon with collage on paper
Paper: 30 x 22 in. (76.2 x 55.9 cm)
Frame: 37 1/2 x 29 1/2 x 1 5/8 in. (95.1 x 74.9 x 4.2 cm)
(26433)



Untitled, 1963
Pencil and crayon with collage on paper
Paper: 24 x 18 in. (61 x 45.7 cm)
Frame: 31 1/2 x 25 1/4 x 1 5/8 in. (80 x 64 x 4.2 cm)
(26434)



Untitled, 1964
Pencil, crayon, marker, and collage on graph paper
Paper: 22 x 17 in. (55.9 x 43.2 cm)
Frame: 29 3/8 x 24 5/8 x 1 5/8 in. (74.5 x 62.5 x 4.1 cm)
(27964)

GALERIE MARIAN GOODMAN



Untitled, 1964
Marker with collage on graph paper
Paper: 17 x 22 in. (43.2 x 55.9 cm)
Frame: 24 5/8 x 29 3/8 x 1 5/8 in. (62.4 x 74.7 x 4.2 cm)
(27986)



Untitled, 1964
Pencil and crayon on paper
Paper: 23 1/2 x 18 in. (59.7 x 45.7 cm)
Frame: 30 7/8 x 25 3/8 x 1 3/4 in. (78.4 x 64.5 x 4.3 cm)
(27971)



Untitled, 1963
Mixed media with collage on paper
Paper: 24 x 18 in. (61 x 45.7 cm)
Frame: 31 3/8 x 25 3/8 x 1 5/8 in. (79.7 x 64.4 x 4.2 cm)
(27974)



Untitled, 1963
Mixed media with collage on paper
Paper: 30 x 22 in. (76.2 x 55.9 cm)
Frame: 37 1/2 x 29 1/2 x 1 5/8 in. (95.1 x 74.9 x 4.2 cm)
(27984)



Untitled, 1962
Mixed media and collage on paper
Paper: 24 3/4 x 18 in. (62.9 x 45.7 cm)
Frame: 31 1/2 x 25 3/8 x 1 5/8 in. (79.9 x 64.5 x 4.1 cm)
(26436)



Untitled, 1962
Black ink on paper
Paper: 24 x 18 in. (61 x 45.7 cm)
Frame: 31 3/8 x 25 3/8 x 1 3/4 in. (79.7 x 64.5 x 4.3 cm)
(26430)

GALERIE MARIAN GOODMAN



Untitled, 1962
Black ink on paper
Paper: 24 1/8 x 18 in. (61.3 x 45.7 cm)
Frame: 31 3/8 x 25 3/8 x 1 3/4 in. (79.8 x 64.5 x 4.4 cm)
(26429)



Untitled, 1962
Pencil on paper
Paper: 18 x 24 in. (45.7 x 61 cm)
Frame: (25 3/8 x 31 3/8 x 1 3/4 in. 64.4 x 79.8 x 4.3 cm)
(26428)



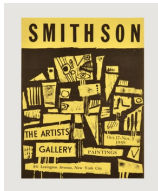
After: Athanasius Kircher 1665 Mundus Subterraneus, 1971
Pencil and ink on paper
Paper: 12 5/8 x 15 1/2 in. (32.1 x 39.4 cm)
Frame: 20 1/8 x 22 7/8 x 1 5/8 in. (51 x 58 x 4.2 cm)
(27982)

ROBERT SMITHSON

Posters 1959 – 1982

13 January – 24 February 2024

66 RUE DU TEMPLE



Smithson poster for the Artist's Gallery, 1959
Ink on paper
12 1/8 x 9 1/8 in. (30.8 x 23.2 cm)
2 copies
(28249)

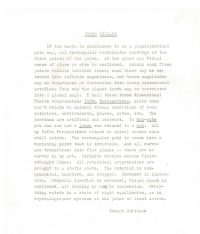


Mono Lake Site / Mono Lake Nonsite
Ephemera ; offset-printed accordion
3/4 x 34 3/8 in. (1.9 x 87.4 cm) (unfolded)
3/4 x 4 3/8 in. (1.9 x 11 cm) (folded)
2 copies
(28272)

79 RUE DU TEMPLE 75003 PARIS TEL. +33 1 48 04 70 52

WWW.MARIANGOODMAN.COM

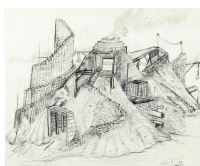
GALERIE MARIAN GOODMAN



Original Press Release, n.d.
Typewritten bond paper
10 7/8 x 8 1/2 in. (27.7 x 21.5 cm)
(28254)



Ephemera - 1000 Tons of Asphalt card
4 3/4 x 6 5/8 in. (12 x 16.7 cm)
2 copies
(28277)



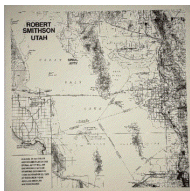
Ephemera - Island Project postcard, 1970
4 1/4 x 5 1/4 in. (10.8 x 13.5 cm)
2 copies
(28280)



Poster for Asphalt Rundown
Ink on paper
40 x 27 in. (101.6 x 68.6 cm)
(28253)



Movie Treatment Poster for Spiral Jetty, 1970
Poster
38 x 22 in. (96.5 x 55.9 cm)
2 copies
(28251)

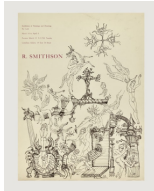


Robert Smithson Utah Map Poster for Spiral Jetty Film Screening at Dwan New York, Ace Los Angeles, and Vancouver, n.d.
Black and white print
11 1/4 x 11 in. (28.6 x 27.9 cm)
2 copies
(28248)



Poster for Dwan Gallery exhibition, 1966
Poster on coated paper
10 x 18 in. (25.4 x 45.7 cm)
(28250)

GALERIE MARIAN GOODMAN



[Three Smithson posters], 1962
Offset on paper
24 x 18 1/8 in. (61 x 46 cm)
2 copies
(28252)



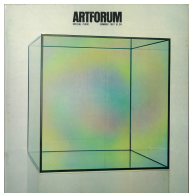
[5730 "Mirror Trail" -- Robert Smithson (c) 1969 Jewish Museum Publication (poster)], 1969
26 x 20 in. (66 x 50.8 cm)
2 copies
(28256)



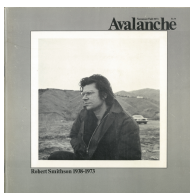
Mass Portfolio: Red Clay from Hebron Placed at Mt. Moriah [poster - 134 pieces], 1969
Poster
20 1/2 x 20 in. (52.1 x 50.8 cm)
2 copies
(28255)



Artforum, Vol. IV number 10, June 1966, 1966
Magazine
10 1/2 x 10 1/2 in. (26.8 x 26.8 cm)
(28278)



Artforum, Vol. V number 10, June 1967, 1967
Magazine
10 1/2 x 10 3/4 in. (26.7 x 27.3 cm)
(28279)



Avalanche Magazine Summer/Fall 1973 (Robert Smithson Memorial), 1973
9 1/4 x 9 1/4 in. (23.5 x 23.5 cm)
(28276)

GALERIE MARIAN GOODMAN



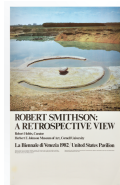
The Witches of Belsen, 1962
Photocollage
Paper: 14 x 7 in. (35.6 x 17.8 cm)
Frame: 20 1/8 x 13 x 1 3/8 in. (51 x 33 x 3.5 cm)
(27979)



A Little Boy's Dream of King Kong, 1963
Ink on paper
Paper: 18 x 14 in. (45.7 x 35.6 cm)
Frame: 25 x 20 3/8 x 1 1/8 in. (63.5 x 51.9 x 2.8 cm)
(27985)



Blind in the Valley of Suicides, 1962
Ink on paper
Paper: 24 x 13 3/4 in. (61 x 34.9 cm)
Frame: 31 3/8 x 21 x 1 5/8 in. (79.7 x 53.5 x 4.2 cm)
(27989)



Robert Smithson: A retrospective view poster (Broken Circle Spiral Hill), 1971
Ink on paper
30 x 18 1/2 in. (76.2 x 47 cm)
(28246)



Robert Smithson: Sculpture curated by Robert Hobbs, 1980-1982
Ink on paper
33 x 22 1/2 in. (83.8 x 57.1 cm)
2 copies
(28247)